

Mono County Recreation – Request for Qualifications

Recreation support services: Planning, GIS, data, media management

Exhibit 3 – Project examples

Ex. 1 – Trailhead kiosks: Designing trailhead kiosk, including creation of trailhead kiosk template. Ability to link information on sign, import mapping products, prepare signs for print.

1a. Simple trailhead map

BUCKEYE WINTER TRAIL

BRIDGEPORT WINTER TRAIL SYSTEM

WINTER OPERATIONS:

- Grooming and plowing operations are weather dependent (Dec. - April 1). For updates: monocounty.ca.gov/sustainable-recreation
- Please park in staging areas identified on map. **DO NOT BLOCK ROADWAY - PROVIDE ACCESS FOR SNOW PLOWING AND EMERGENCY VEHICLE OPERATIONS**
- Camp Like a Pro! ESSRP.org/camping
RESPECT PRIVATE PROPERTY - NO TRESPASSING
- Do not ride or walk in cross country ski tracks.
- Respect other trail users: Yield right of way according to etiquette code. Fat bikes yield to other non-motorized users. All users yield to grooming machines.
- Over-Snow-Vehicles (OSV) yield to all other users. **SPEED LIMIT IS 15 MPH**
- WINTER SAFETY:** Know before you go!
Bridgeport Ranger Station: (760) 932-7070

PROTECT YOUR RESOURCES

- Please respect **TEMPORARY** winter closures. **NO WHEELED VEHICLES WITHIN THE GROOMED AREAS.** Fat Bikes OK. Motorized vehicles and bikes are prohibited in wilderness areas.
- HELP KEEP YOUR ROUTES OPEN:** Riding in soft conditions causes resource damage that ruins routes, making them susceptible to closures for repairs and maintenance. **DO NOT RIDE IN SOFT CONDITIONS (MUD OR SNOW):** If you leave a rut deeper than 2 inches, it's too soft - do not ride.
- STAY SAFE:** Vehicles riding on soft surfaces (mud or snow) **WILL LIKELY GET STUCK.** Rescue is **NOT** guaranteed and is expensive. Emergencies: DIAL 911

This program made possible through support of local volunteers, the U.S. Forest Service, and Mono County.

USDA is an equal opportunity provider, employer, and lender.

Ex 1b. Trail system map, formatted for printing as a folded brochure

SNOWMOBILES & OVER SNOW VEHICLES (OSV)

Miles of snow-covered roads and play areas are open to snowmobiles and over snow vehicles (OSV) in the Mammoth, June, and Mono Lake areas. A variety of terrain, from wide-open meadows, forested areas and the groomed OSV network provide opportunities for all skill levels. Trails that are specifically designated for snowmobiling are marked with orange diamonds and groomed by Inyo National Forest and commercial guide service providers. In addition to the groomed OSV trail network, there are approximately 150,000 acres open to over snow vehicles equipped and prepared to travel off the maintained trail system.

RECOMMENDED STAGING AREAS

SHADY REST PARK

- Located in Mammoth Lakes off Sawmill Cliff Road.
- Starting point for A Trail, B Trail and K Trail.

CINDER SHED

- Located on the north side of HWY 203, 1.5 miles west of the Mammoth Scenic Loop/HWY 203 junction.
- Provides access to the C Trail and F Trail.
- The F Trail corridor is a slow zone (15 mph limit).

DEADMAN SUMMIT

- Located at the intersection of HWY 395 and Bald Mountain Road.
- Provides access to the I Trail, D Trail and G Trail.

LOOKOUT MOUNTAIN

- Located at the intersection of HWY 395 and the Mammoth Scenic Loop, east side.
- Provides access to the A Trail, L Trail and G Trail.

JUNE LAKE JUNCTION

- Located at the intersection of HWY 395 and HWY 158.
- Provides access to the I Trail and G Trail.

ADDITIONAL RESOURCES

www.mammothtrails.org/activity/50/snowmobiling/
www.mono-county.org/things-to-do-by-snow/snowmobiling/
www.visitmammoth.com/snowmobiling/

CLOSED & RESTRICTED AREAS
 All closed areas are indicated on the map.

AREAS CLOSED OR RESTRICTED TO MOTORIZED USERS ARE AS FOLLOWS:

- Mono Basin National Forest Scenic Area State Lands.
- Devils Postpile National Monument, Wilderness, and Research Natural Areas.
- Mammoth Mountain and June Mountain Ski Areas.
- All Blue diamond non-motorized trails including Obsidian Dome, Deadman Summit and Shady Rest Winter Trails.
- The Mammoth Lakes Basin is closed to motorized use and bikes until April 15th of each year. After April 15th, the Lakes Basin is open to all users.
- Active timber sales and logging roads.
- Groomed winter trails are closed to all wheeled vehicles (except winter fat bikes).

NON-MOTORIZED ACTIVITIES

Recreating in the Eastern Sierra is an experience of unparalleled scenery, serenity, fitness and fun for beginners to experts, thanks to the varied terrain and unrivaled backdrop of the Sierra Nevada landscape. There are over 30 miles of groomed non-motorized winter trails in and around Mammoth Lakes, providing opportunities to explore the Inyo National Forest on skis, snowshoes, and winter fat bikes. There is a wide variety of terrain for every ability level.

The Mammoth Lakes Blue Diamond Nordic Routes offer 7 miles of un-groomed opportunities marked with blue diamonds attached to trees along the way. These ski and snowshoe routes were established by the U.S. Forest Service in the early 1980s and have been maintained by the Range of Light Group, Sierra Club, in partnership with the U.S. Forest Service.

MAMMOTH LAKES BLUE DIAMOND NORDIC ROUTES MAP
www.mtlpa.org/images/downloads/MammothLakesBlueDiamondNordicRoutesMap.pdf

ADDITIONAL RESOURCES

www.mammothtrails.org/activity/40/cross-country-skiing/
www.mammothmountain.com/winter-activities/cross-country-skiing/
www.visitmammoth.com/adventures/
www.fs.usda.gov/refresh/invo/refresh/7rcid4-0t528

TRAIL ETIQUETTE & SAFETY

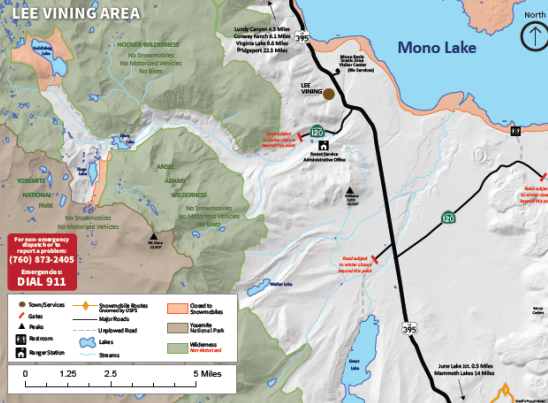
PLEASE ENJOY THIS MULTI-USE TRAIL SYSTEM RESPONSIBLY

The National Forests are the lands of many users – and many users. People traveling by skis, snowshoes, winter fat bikes and snowmobiles will share the same routes and areas.

- Respect other trail users, be courteous and yield right of way. All users yield to grooming machines.
- All multi-use trails are two-way traffic.
- Always stay on the right-hand side of the trail. Pass on the left.
- Slowdown of blind turns:** Slow down for oncoming traffic. Speed limit in slow zone areas is 15 mph.
- Please avoid all roads or areas posted with closures or restrictions, or as shown as closed on map.
- Keep dogs leashed at all times. Pick up and dispose of all dog waste on and off trails. Leashing is prohibited by law.**
- Winter travel in the backcountry requires proper gear and appropriate clothing, be self-sufficient!
- Use extreme caution when recreating at night. Be visible and use the brightest lights you can find.
- Winter fat bikes (5” wide tires or wider with low tire pressure) are allowed on all groomed trails outside of ski areas.
- If winter fat biking leaves a rut deeper than 2 inches and/or you can't ride in a straight line... it's too soft to ride!
- TRAILS ARE NOT ALLOWED:** On any non-motorized trails or Nordic Recreation Areas (Shady Rest, Obsidian Dome, Tamarack).
- Crossing two-lane plowed roads at right angles is permitted.
- Crossing four-lane plowed roads is prohibited unless otherwise posted.

All snowmobiles must display a current state registration sticker to operate on National Forest Lands. www.dmv.ca.gov/portal/index.html#registration/new-registration/regions-as-off-highway-vehicle-807

LEAVE NO TRACE!



VISITOR INFORMATION

MAMMOTH LAKES WELCOME CENTER & RANGER STATION
 (760) 934-5500
 Located on HWY 203 at the entrance to the Town of Mammoth Lakes.

MONO BASIN SCENIC AREA VISITOR CENTER
 (760) 947-3844
 Located off of HWY 395 in Lee Vining. No services in winter.

WHITE MOUNTAIN RANGER STATION
 (760) 873-2500
 Located on HWY 395 in Bishop.

TOWN OF MAMMOTH LAKES PARKS & RECREATION DEPARTMENT
 (760) 934-8989 ext 222
www.mammothrecreation.com

MAMMOTH LAKES TOURISM
 (760) 934-2717 or 1-888-GO-MAMMOTH
www.visitmammoth.com

TRAIL CONDITIONS (MAMMOTH LAKES TRAIL SYSTEM)
www.mammothtrails.org/trail-conditions/

ADDITIONAL RESOURCES
www.mammothtrails.org/local-recreation/
www.sieraforever.com

**BE FRIENDLY! BE SAFE!
 HAVE FUN! SHARE THE TRAIL!**

MAMMOTH LAKES AND JUNE LAKE AREA
INYO National Forest

WINTER SAFETY

ALWAYS WEAR YOUR SEATBELT

- Always wear your seat belt every time you get into a car.
- Do not drink and drive.
- Do not use drugs and drive.
- Do not use your cell phone while driving.
- Do not drink and use your cell phone while driving.
- Do not use drugs and use your cell phone while driving.
- Do not drink and use your cell phone while driving.
- Do not use drugs and use your cell phone while driving.

DRIVE SAFELY

- Always wear your seat belt.
- Do not drink and drive.
- Do not use drugs and drive.
- Do not use your cell phone while driving.
- Do not drink and use your cell phone while driving.
- Do not use drugs and use your cell phone while driving.
- Do not drink and use your cell phone while driving.
- Do not use drugs and use your cell phone while driving.

LEAVE NO TRACE!

TRAIL COURTESY

- Slow Zones (15 MPH)
- Closed to Snowmobiles
- Open to Snowmobiles
- Groomed Underplow
- Groomed Trail
- Un-groomed Trail
- Lakes Basin Winter (15 MPH)
- Unplowed Road
- Major Road
- Tunnel
- Gate
- Peak
- Bridge
- Turn
- Lake
- Stream
- Vegetation
- Gas
- Phone
- Kiosk
- Snowplay Area
- Hut
- Restroom
- Ranger Station
- RV Park
- Hotel
- Transport
- Hospital
- Nearest Skiing
- Alpine Skiing
- Ice Skating
- Snowplay Area
- Hut
- Restroom
- Ranger Station
- RV Park
- Hotel
- Transport
- Hospital
- Nearest Skiing
- Alpine Skiing
- Ice Skating
- Snowplay Area
- Hut
- Restroom
- Ranger Station
- RV Park
- Hotel
- Transport
- Hospital
- Nearest Skiing
- Alpine Skiing
- Ice Skating
- Snowplay Area
- Hut
- Restroom
- Ranger Station
- RV Park
- Hotel
- Transport
- Hospital

MammothTrails.org

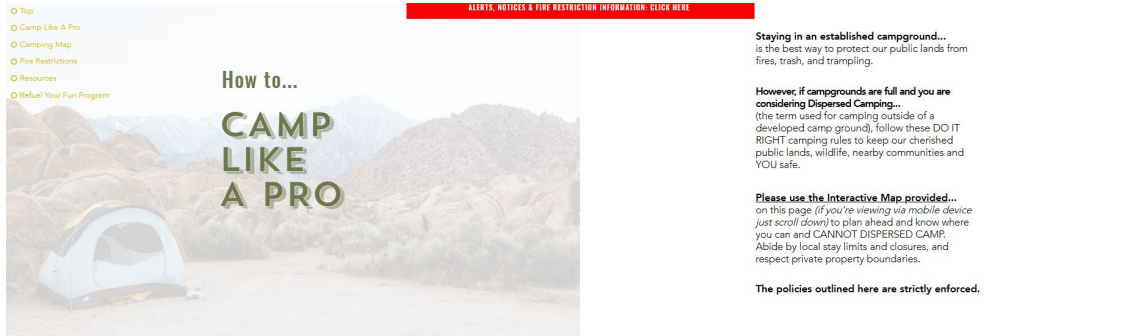
The Mammoth Lakes Trail System is a multi-use trail system for snowmobilers, skiers, snowshoers, winter fat bikers, and hikers. The trail system is located in the Mammoth Lakes area of the Inyo National Forest. For more information on the trail system, visit www.mammothtrails.org.

Emergency Services:
 Forest Service: (760) 873-2405
 Dial 911

Ex. 2 – Camp Like a Pro products:

Design: Assist in the graphic design for the expansion of the Camp Like a Pro campaign. Commonly used products within this campaign include posters, rack cards, stickers, and will soon include printables of various sizes with specific messaging for staging area signage.

GIS / Web Management: Assist in the on-going maintenance and updating of the Camp Like a Pro website (currently <https://www.essrp.org/camping>, soon to be [Camplikeapro.org](https://www.camplikeapro.org)), including editing or incorporation of new messaging sections, updating of site pop-up, maintenance and updating of ESRI interactive web map, traffic analytics, etc.



ALERTS, NOTICES & FIRE RESTRICTION INFORMATION: [CLICK HERE](#)

- Top
- Camp Like a Pro
- Camping Map
- Fire Restrictions
- Resources
- Refuel Your Fun Program

How to...
CAMP LIKE A PRO

Staying in an established campground... is the best way to protect our public lands from fires, trash, and trampling.

However, if campgrounds are full and you are considering Dispersed Camping... (the term used for camping outside of a developed camp ground), follow these DO IT RIGHT camping rules to keep our cherished public lands, wildlife, nearby communities and YOU safe.

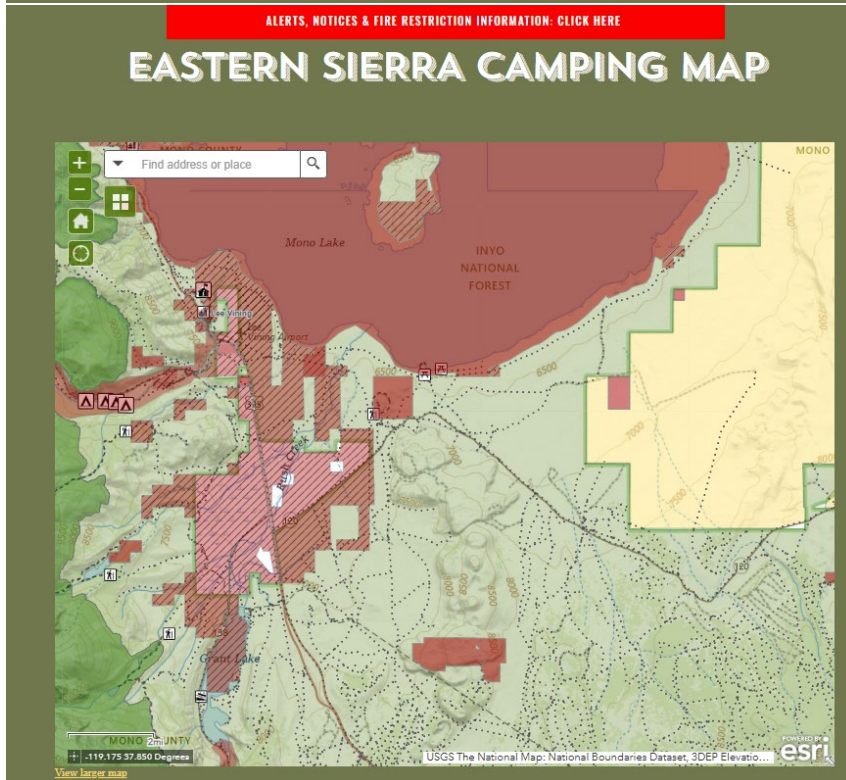
Please use the Interactive Map provided... on this page (if you're viewing via mobile device just scroll down) to plan ahead and know where you can and CANNOT DISPERSED CAMP. Abide by local stay limits and closures, and respect private property boundaries.

The policies outlined here are strictly enforced.



**PROS PREPARE.
KNOW BEFORE YOU GO.**

Facilities, availability and conditions vary.
Know where you can and can't camp. Be prepared for extreme weather and emergencies – help may be a long way off, whether for a flat tire or a twisted ankle.



ALERTS, NOTICES & FIRE RESTRICTION INFORMATION: [CLICK HERE](#)

EASTERN SIERRA CAMPING MAP

Find address or place

Mono Lake
INYO NATIONAL FOREST
Mono
Crest Lake

Mono County
+110.175 37.850 Degrees
[View larger map](#)

USGS The National Map: National Boundaries Dataset, SDEP Elevatio...
esri

Ex. 3 – Creation of logos and branding (various products)

Ex. 3a. Sample logo (needs some improvement, can you help?)




Sustainable Outdoors & Recreation

Ex. 3b. Products that promote recreation within Mono County. Branding would ideally be compatible with existing theme of Mono County Tourism, as seen on their website:

<https://www.monocounty.org/plan-your-trip/visitor-guides/>

Back Road Tours in the Eastern Sierra

ROUTE 9 OLD HWY 395 • ABERDEEN • FISH SPRINGS



The jagged walls of Sawmill Canyon are a haven for rare Sierra Nevada bighorn sheep. In the foreground, black volcanic rocks contrast sharply with the soft hues of the valley floor.

THIS EASY ROUTE TAKES YOU LESS THAN A MILE FROM TODAY'S HWY. 395 BUT MORE THAN A CENTURY INTO THE PAST — BACK TO A TIME WHEN THE MAIN ROADWAY THROUGH THE EASTERN SIERRA WAS NOTHING BUT A PAIR OF WAGON TRACKS. TAKE THIS PRE-1962 ROUTE TO SEE SPECTACULAR SCENERY AT A LEISURELY PACE, WITH THE GHOSTS OF FRUIT FARMERS AND PROSPECTORS AS YOUR FELLOW TRAVELERS.

What to expect: Easy driving, open year-round. Much of the route is paved and the unpaved parts are graded and well-maintained. Length: 14.5 miles one way, 17.7 miles if you loop back via the "new" highway.

Driving time: about one hour.


Getting there: From Independence starting at the corner of Highway 395 and Market Street, go 8.3 miles north on U.S. 395 and turn left (west) onto Black Rock Springs Road. (GPS N 36.9172; W -118.2416) From Big Pine starting at the high school at the south end of town, go 17.5 miles south on 395 and turn right onto Black Rock Springs Road. (Or begin at the north end of the route, turning right onto Fish Springs Road 4.3 miles south of Big Pine. GPS N 37.1058; W -118.2534)

Along the route: Black Rock Springs Road leads straight toward the Sierra at one of its most ruggedly scenic points, Sawmill Canyon. A flame once carried wood from the creek to a nearby sawmill. Today, rare Sierra Nevada bighorn sheep come to the mouth of the canyon when deep winter snows drive them to lower elevations.

In less than a mile, the road meets old 395 at a grove of locust trees planted in the early 1890s to furnish wood for alkaline-tolerant fence posts. Turn right and drive north through black basalt lava flows. You'll pass the road to Division Creek Powerhouse, a working hydroelectric plant originally built in 1908 to power dredges digging the Los Angeles Aqueduct.

Aberdeen, at 5 miles along the route, was a small but thriving community in the first two decades of the 20th century — supported primarily by the Red Mountain Fruit Ranch to the north. The Aberdeen Store and Restaurant, open seasonally, features an old fireplace, historic photos and John Wayne's favorite bears.

The paved route becomes the black cinder "Tinemaha Road" where it intersects the road to Goodale Creek, site of a BLM campground. About a mile farther is Taboose Creek and a county campground. Taboose is derived from a Shoshone word for the edible ground nut or yellow rut grass, once a staple food for native Paiutes who irrigated meadows to enhance its growth.



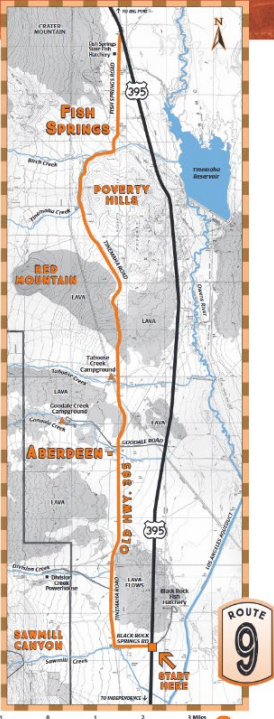
Rainbow trout
SILVER RAINBOW

From here, the graded dirt road heads into the Poverty Hills, named by disgusted gold miners when their extensive claims produced less than hoped. To the west you can see Red Mountain, the youngest volcanic cinder cone in the Owens Valley, formed only 600-800 years ago.

The road turns back into pavement as it crosses Tinemaha Creek, named for a legendary Paiute war chief. In the early 1900s this site was part of the thousand-acre Red Mountain Fruit Ranch. You can find remnants of the extensive irrigation system west of the county campground.

After crossing Birch Creek, 12 miles from the beginning of the route, you'll reach an intersection with no sign. Bear left (north), taking the road that passes a small hill of black rock. In half a mile is another intersection, continue north.

Fish Springs, now a state fish hatchery, was once the location of a Paiute village. Later it was owned by J.W. McMurtry, who in 1872 brought the Owens Valley's first rainbow trout for his private pond. A mile past Fish Springs the route ends when it rejoins the new 395.



SCALE 0 2 4 Miles

Ex. 3c. Fall Colors map and etiquette information

FALL COLOR MAP CALIFORNIA'S EASTERN SIERRA

1 BIG PINE CANYON

Scenic drive: Head west on Glacier Lodge Road; the journey starts in scrub and sage, winding its way from the valley floor up Big Pine Creek until the road ends near the old Glacier Lodge. The road winds upward from 4,000 to 8,000 feet with aspen, cottonwood and willows hugging the sides of the creek and canyon walls. **Tip:** Hike farther up the canyon for grand alpine scenery and views of the Palisade Glacier, the southernmost glacier in North America.

2 CITY OF BISHOP

Scenic drive: Head east from US 395 toward the Owens River, where large stands of cottonwood grace the valley floor with brilliant gold. **Tip:** Visit the Bishop City Park for a morning stroll or afternoon picnic. It's an arboretum with dozens of colorful trees and a picture perfect pond that's home to mallard ducks and rainbow trout.

3 BISHOP CREEK CANYON

Scenic drive: Just 20 minutes from Bishop, Lake Sabrina, South Lake and North Lake offer gorgeous views of surrounding 13,000' peaks dusted with snow for contrasting beauty. **Tip:** Check out the waterfall across the road from Bishop Creek Lodge. **Tip:** Rent a boat at Lake Sabrina or South Lake to fish and capture unforgettable photos.

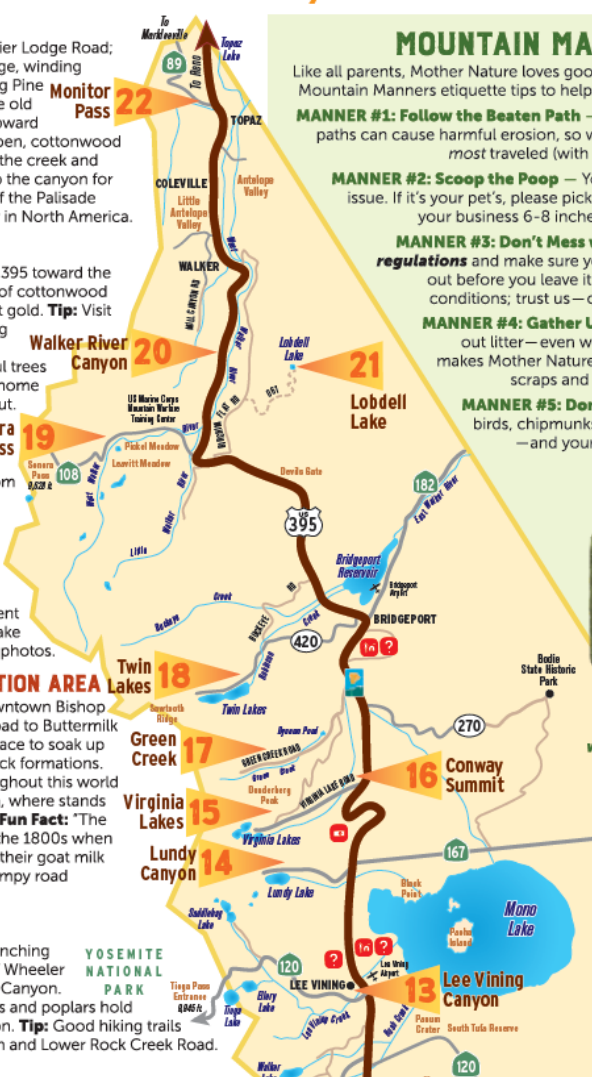
4 BUTTERMILK RECREATION AREA

Scenic drive: 7 miles west of downtown Bishop via Highway 168, you'll find the road to Buttermilk Recreation Area. It's a beautiful place to soak up sun among giant boulders and rock formations. Dozens of dirt roads zigzag throughout this world famous rock climbing destination, where stands of aspen cluster around streams. **Fun Fact:** "The Buttermilks" were named during the 1800s when ranchers from the north brought their goat milk to sell to Bishop residents; the bumpy road turned the milk into buttermilk.

5 ROUND VALLEY

Scenic drive: Tour this historic ranching area by car for awesome views of Wheeler Crest, Mt. Tom and Bishop Creek Canyon. Round Valley's huge cottonwoods and poplars hold their fall colors late into the season. **Tip:** Good hiking trails are available in Pine Creek Canyon and Lower Rock Creek Road.

6 LOWER ROCK CREEK



MOUNTAIN MANNERS

Like all parents, Mother Nature loves good manners! Here are a few Mountain Manners etiquette tips to help protect the Eastern Sierra:

MANNER #1: Follow the Beaten Path — Straying from designated paths can cause harmful erosion, so we ask you to take the road most traveled (with apologies to Robert Frost).

MANNER #2: Scoop the Poop — Your #2 is becoming our #1 issue. If it's your pet's, please pick it up! If it's your own, bury your business 6-8 inches or better yet, pack it out.

MANNER #3: Don't Mess with Fire — Follow all fire regulations and make sure your campfire is completely out before you leave it. Don't build a fire in windy conditions; trust us—one spark can destroy it all.

MANNER #4: Gather Up Garbage — Please pack out litter—even when it's not yours! Nothing makes Mother Nature happier. Remember, food scraps and orange peels are litter too.

MANNER #5: Don't Feed the Bears or deer, birds, chipmunks, etc. Please keep yourself—and your food—out of the reach of all wildlife.

—THANK YOU!



For info on how and where to camp like a pro, visit www.ESSRP.org/camping



15 VIRGINIA LAKES

Scenic drive: At the top of Conway Summit, the five-mile Virginia Lakes Road glows with thick aspen groves on both sides. **Tip:** Anglers! Big and Little Virginia lakes are well-stocked with rainbow trout.

16 CONWAY SUMMIT

Scenic drive: Easily viewed from US 395, Conway Summit in fall is a multi-layered canvas of autumn color. **Tip:** Just south of the 8,900' (2,713 m) pass, the Mono Lake Vista pull-out is another scenic photo op.

17 GREEN CREEK

Scenic drive and hike: Two miles (3.2 k) south of the town of Bridgeport, Green Creek Road is about an 8-mile drive to thick aspen groves, a campground and the Green Creek trail to Green Lake, East and West lakes. **Tip:** While not a fall color destination, don't miss a visit to nearby Bodie State Historic Park, the largest unrestored ghost town in the West.

18 TWIN LAKES - BRIDGEPORT

Scenic drive: With expansive ranch lands, views of the Sawtooth Ridge, and the lakes' brilliant aspens and cottonwood—well, this is why the "Sunday Drive" was invented! **Tip:** The Twin Lakes Recreation Area is home to some of the best hiking, camping, fishing and boating in the Sierra.

19 SONORA PASS

Scenic drive: Half-way between Bridgeport and Walker, Highway 108 winds through sage-filled meadows intersected by the "Wild & Scenic" West Walker River. Above the orange-gold hues of Leavitt Meadows, the road becomes steep with sharp curves up to the pass (not recommended for long trailers). **Tip:** On the east side of the pass, stop at the pull-out overlook to view roaring Leavitt Falls.

20 WALKER RIVER CANYON

Scenic drive: Pine, willow, aspens and cottonwood grace the Antelope Valley and Walker River Canyon, which turn color later in the season. **Tip:** The Mountain Gate Park just south of Walker has a fishing platform and is a great rest-stop.

21 LOBDELL LAKE

Scenic drive: For adventurous leaf peepers with 4WD and good off-road driving skills, the dirt road from Walker/Bridgeport to Lobdell Lake offers wonderful autumn vistas. **Tip:** Not passable after rain or snow. Pick up a Humboldt-Toiyabe National Forest map before you go.

22 MONITOR PASS

Scenic drive: About 12 miles (16 k) north of Walker/Coleville, Monitor Pass/Highway 89 offers lovely fall color vistas due to stands of aspen along the pass and through Hope Valley in neighboring Alpine County. **Tip:** The colors around nearby Topaz Lake at the California/Nevada border are beautiful later in the season. The fishing is great, too!

Ex. 3d. Visitor guide formatted as a tri-fold

SOUTHERN MONO COUNTY

1 ROCK CREEK CANYON

Pristine glacier-carved valley

Cascading from a high alpine valley in the John Muir Wilderness, Rock Creek Canyon offers 20 miles of a gorgeous creekside setting for year-round outdoor recreation. Rock Creek is famous for Little Lakes Valley, where a string of high-elevation lakes are linked by hiking trails surrounded by 13,000-foot peaks. Summer activities in the canyon include hiking, fishing, boating, horseback riding and camping. At Tom's Place and along the canyon, you'll find year-round lodging, general stores and food services. In autumn don't miss the shimmering fall colors which grace the canyon.

MOUNTAIN BIKERS enjoy Lower Rock Creek Canyon, which offers 2,000 vertical feet of exhilarating single-track mountain bike trails. The multi-terrain begins south of Tom's Place, just off US 395.

2 CROWLEY LAKE & MCGEE CREEK CANYON

World-famous trout fishing destination and a local favorite for wildflowers and fall color

Dominating the broad expanse of Long Valley, Crowley Lake is the focal point of the annual opening of fishing season in Mono County. The marina offers boat rentals, tackle, and camping and RV sites.

Surrounded by massive peaks, nearby McGee Creek Canyon is a favorite for camping, stream fishing, hiking, and horseback riding.

COLORFUL Wildflowers, open meadows, and dramatic views make McGee Creek Canyon a great place for photographers and nature lovers. Hike or ride horseback up the canyon's high alpine lakes and horse ponds.

3 CONVICT LAKE

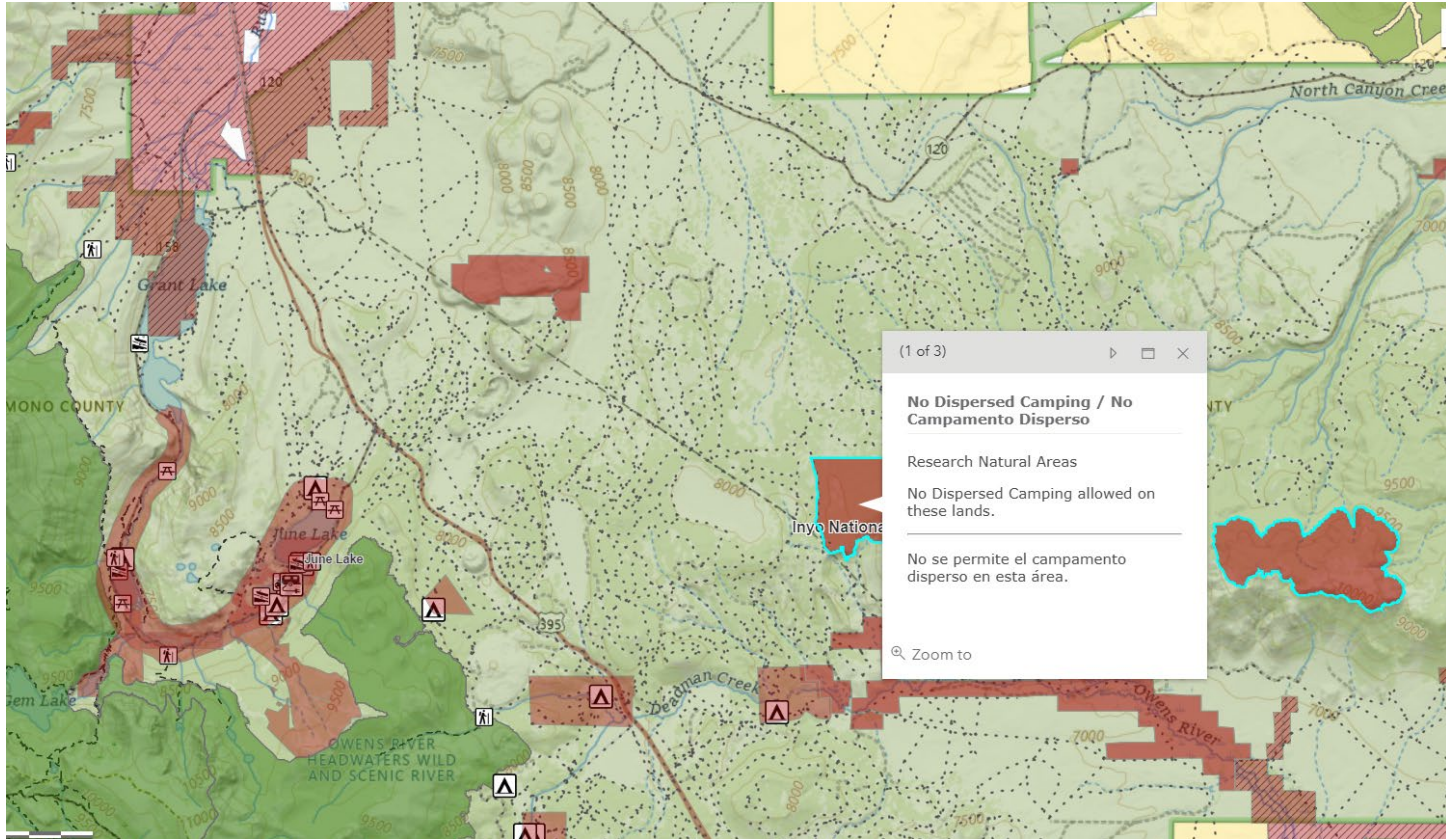
Don't let the name deceive you

Convict Lake got its name from an incident in 1871, when inmates from a Nevada prison escaped here and battled their way out with a shootout. Today, visitors escape to Convict Lake for fishing, hiking, horseback riding, camping, and to enjoy fine dining (or to tie the knot!) at Convict Lake Restaurant.

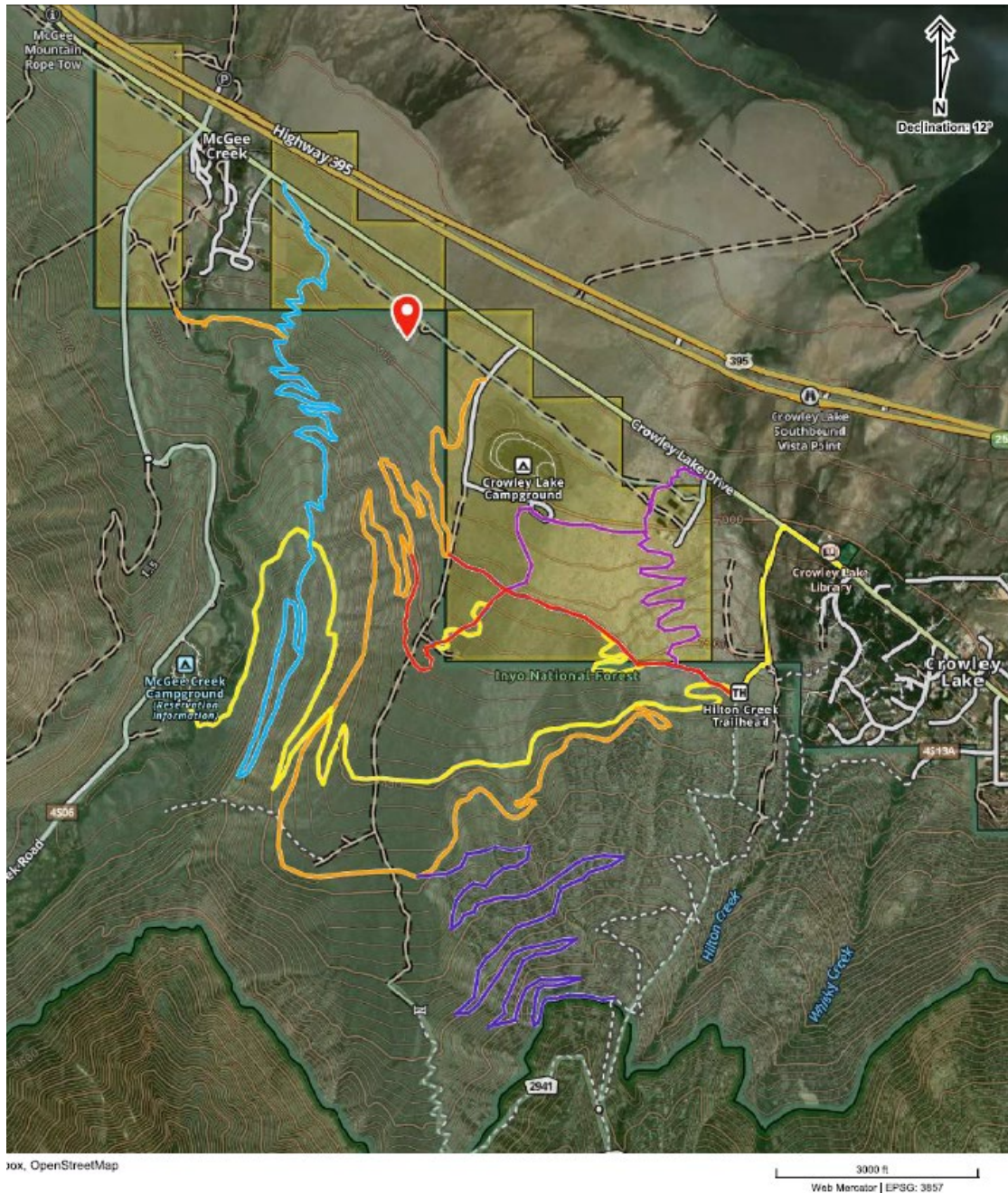
Ex. 4 GIS – Mapping products

Mapping products include maps within the above examples (1 – 3). Mapping products are used both within printed products (ex. Ex 1.) or as dynamic, interactive web maps (ex. Ex 2 – Camp Like a Pro). Mapping products are also used within planning documents, such as proposals for new trails, or maps to support division planning documents (ex. Master Trails Plan).

Ex. 4a. Camp Like a Pro interactive web map. Layers include Forest Service system roads, land ownership, jurisdictional boundaries, and custom created layers that depict if camping is allowed or not, or if other restrictions are present in a given area (ex. fire restrictions).



Ex. 4b. Map for proposed trail alignments within a partner project. Note – this map was created by a partner within Gaia – we accept mapping within different programs but would prefer products made within ArcPro and eventual goal of consistent map theme. (We haven't had time to import this into ArcPro and create our template....could you help us with that?). Important features on this map include roads, forest service roads, facilities (ex. campgrounds), trail alignments created via gps tracking, and topographic data.



Ex. 5 – Planning

Mono County Recreation is a relatively new division of Mono County Public Works that supports all things outdoor recreation within Mono County. Commonly, projects are planned and performed with partners (ex. USFS, BLM), but there are internal County projects as well; specifically as it pertains to future management of outdoor recreation and compilation of community input and other data sources to inform planning decisions and projects. Contractors need not be qualified to perform all planning project types (ex. may not be suited to assist with environmental review), but the more projects you can help with, the better.

Ex 5a. Mono County Trails Master Plan, as part of the Mono County General Plan: Last updated 2015, it is time for us to update this document – this would be an assignment for a contractor selected within this RFQ.

Current trails plan:

<https://www.monocounty.ca.gov/generalplan/appendix-g-mono-county-trails-plan>

Site specific projects:

Ex. 5b. Mountain Gate Park: Mountain Gate Park is a County-owned parcel which currently has park facilities on it (restrooms, par course, fishing dock). An adjacent County-owned parcel is also considered part of the park, but is not yet developed. Plans for the park and adjacent park parcel include restoration (post-fire restoration of native species for beautification and habitat restoration), construction of a trail, and other possible features, such as an additional parking area, disc golf course, dog park, etc. The planning document cited here compiles public input – we are ready for the next phase of planning which may include project study reports, environmental review reports (to eventually support CEQA decisions), and project implementation plans.

https://www.monocounty.ca.gov/sites/default/files/fileattachments/antelope_valley_rpac/meeting/32968/4b_mountaingatepark_draft_24april2023.pdf

Ex. 5c. Environmental Review documents. Mono County Recreation, along with Mono County Community Development and Mono County Public Works, may have projects that will require environmental review, such as being a lead agency on CEQA, or a Responsible Agency participating with partners in NEPA. Planning documents to support environmental review include specialist reports (wildlife study, habitat study, archaeological study, etc.), Initial Studies, Negative Declarations / Mitigated Negative Declarations, or Environmental Impact Reports.

Here is an example of an EIR that Mono County prepared for our CEQA review to support our General Plan update in 2015:

<https://monocounty.ca.gov/planning/page/general-plan-eir>