



**District 8**  
**San Bernardino Co.**  
**US-395 Corridor Improvements**  
**Between Routes 15 and 58**  
February 2013

---

**Key Theme of Corridor Improvements:  
Reduce congestion and increase  
operational efficiency.**

# SANBAG Focus on the Victor Valley

---

- Victor Valley Area Transportation Study
  - Need for future freeways & interchanges
  - Lane requirements for major arterial roadways and intersection
  - Right-of-way strategy for new corridors
  - Measure I 2010-2040 Strategic Plan
  - Allocation of State and Federal Funds

# Need for the Project - Statistics from Existing US-395

---

- Traffic growth
  - 80% increase in last 15 years (4% per year)
  - 25,000 vehicles daily in 2005
- Trucks
  - Represent 18 percent of all traffic
  - Large trucks (5+ axles) are 75% of all trucks
- Congestion
  - Long backups particularly on Friday afternoons and weekends

# Challenge: Separate/Lessen Impact of Truck/Recreational Traffic on Local Traffic



# Percentage of Recreational Traffic is High



# Heavy Volume Even in Mid-Day



# Increasing Development and Driveways





# Traffic Slows Behind Trucks and RVs



# Trucks Turning Onto and Off of Roadway



# Traffic Heavy Even at Improved Intersections



# Purpose and Need for the Projects - Population Growth Percentages

	Last Year	Last 5 Years
Adelanto	6.2%	33.8%
Apple Valley	5.5%	20.5%
Hesperia	5.2%	25.0%
Victorville	9.8%	40.7%
Total V. Valley	6.9%	29.5%
SB County	2.1%	12.9%
California	1.2%	6.8%

# Purpose and Need for the Projects – Existing and Forecast Population

---

	<u>Existing</u>	<u>In 2035</u>
■ Adelanto	25,000	130,000
■ Apple Valley	68,000	130,000
■ Hesperia	80,000	220,000
■ Victorville	95,000	195,000
■ 150% increase over 2006 (3% per year avg.)		



---

# Current and Proposed Projects along and in the vicinity of Corridor:

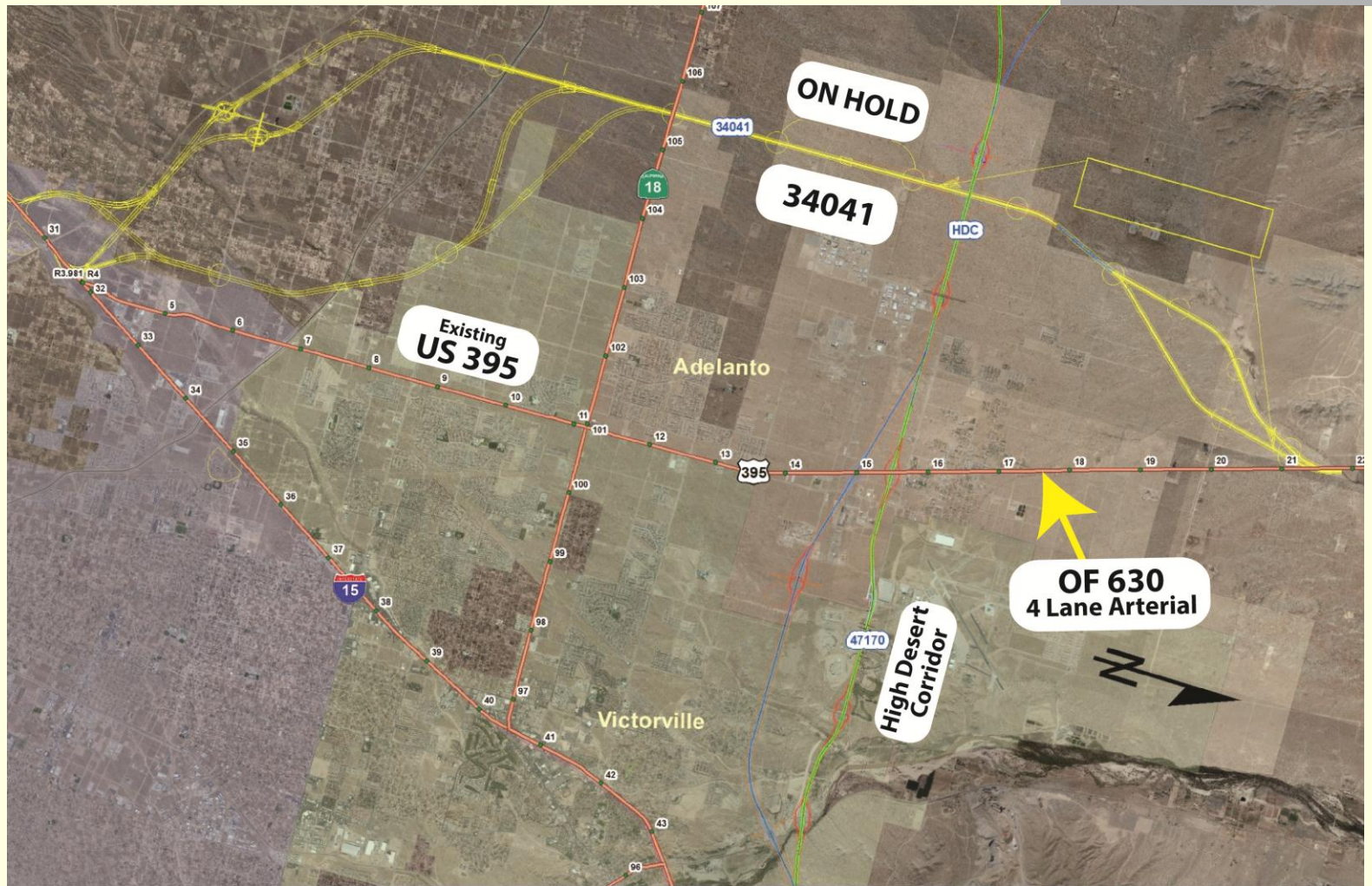


# OF 630

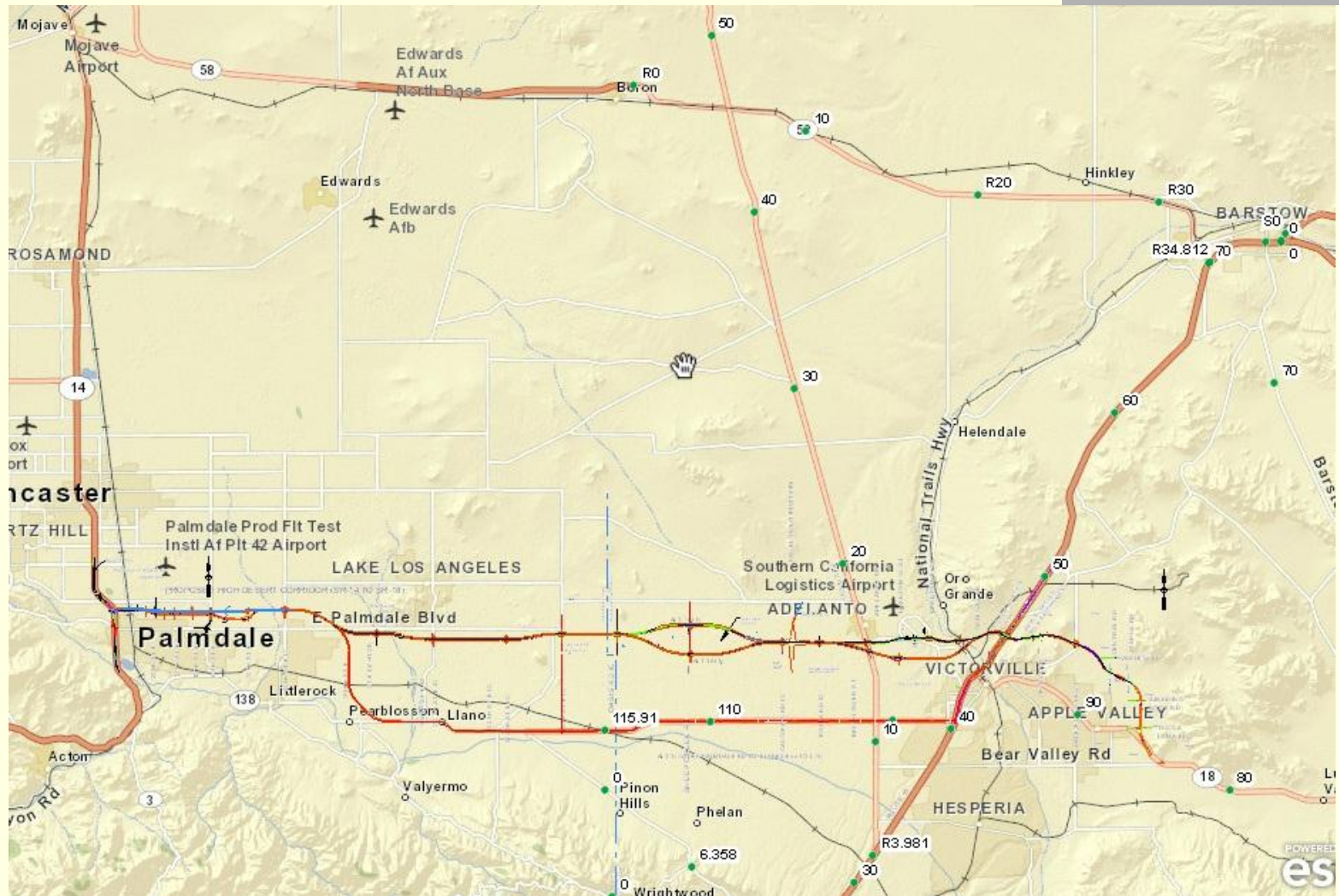




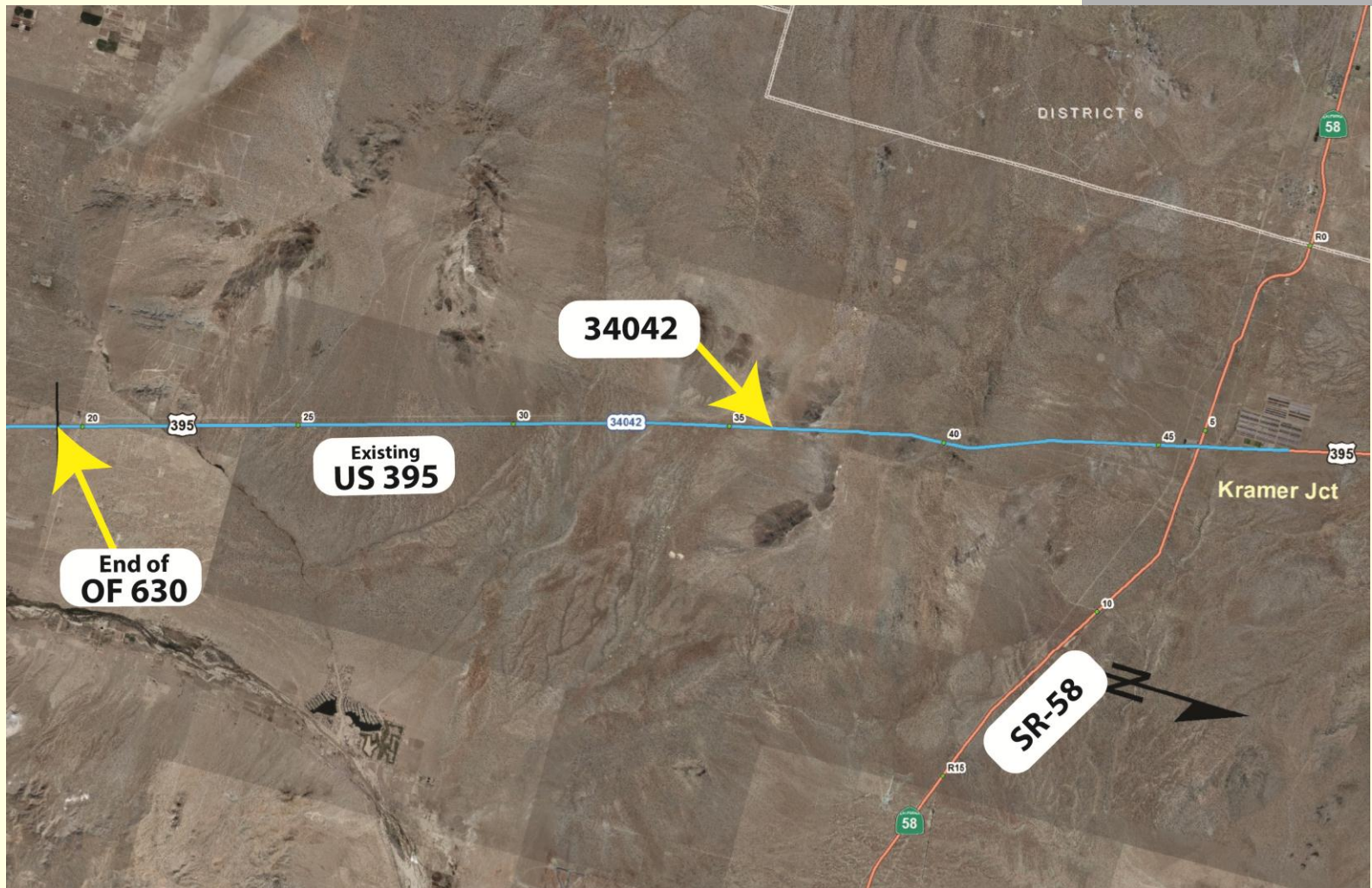
# 34041, High Desert Corridor 47170



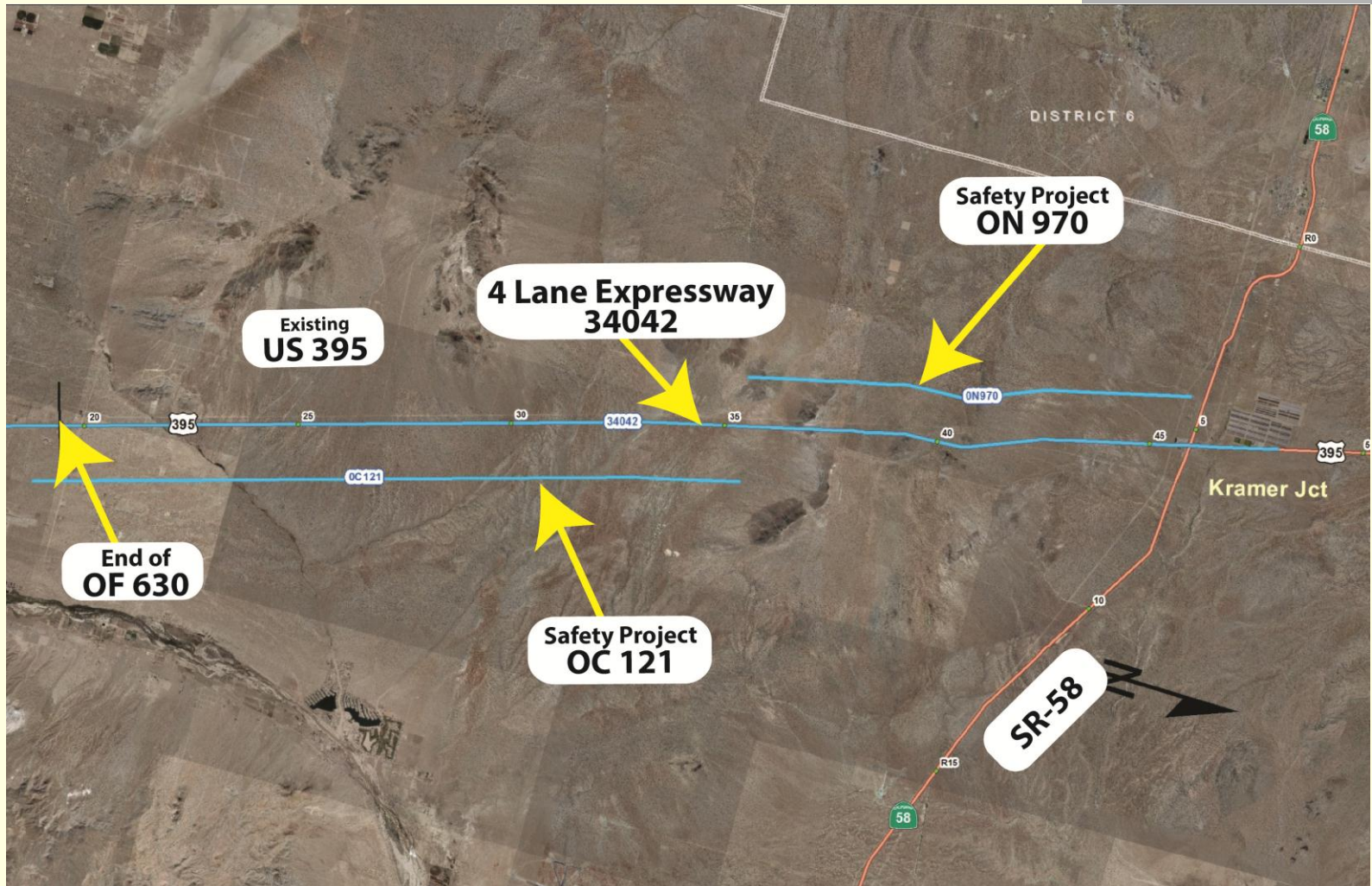
# High Desert Corridor From I-15 to SR-14



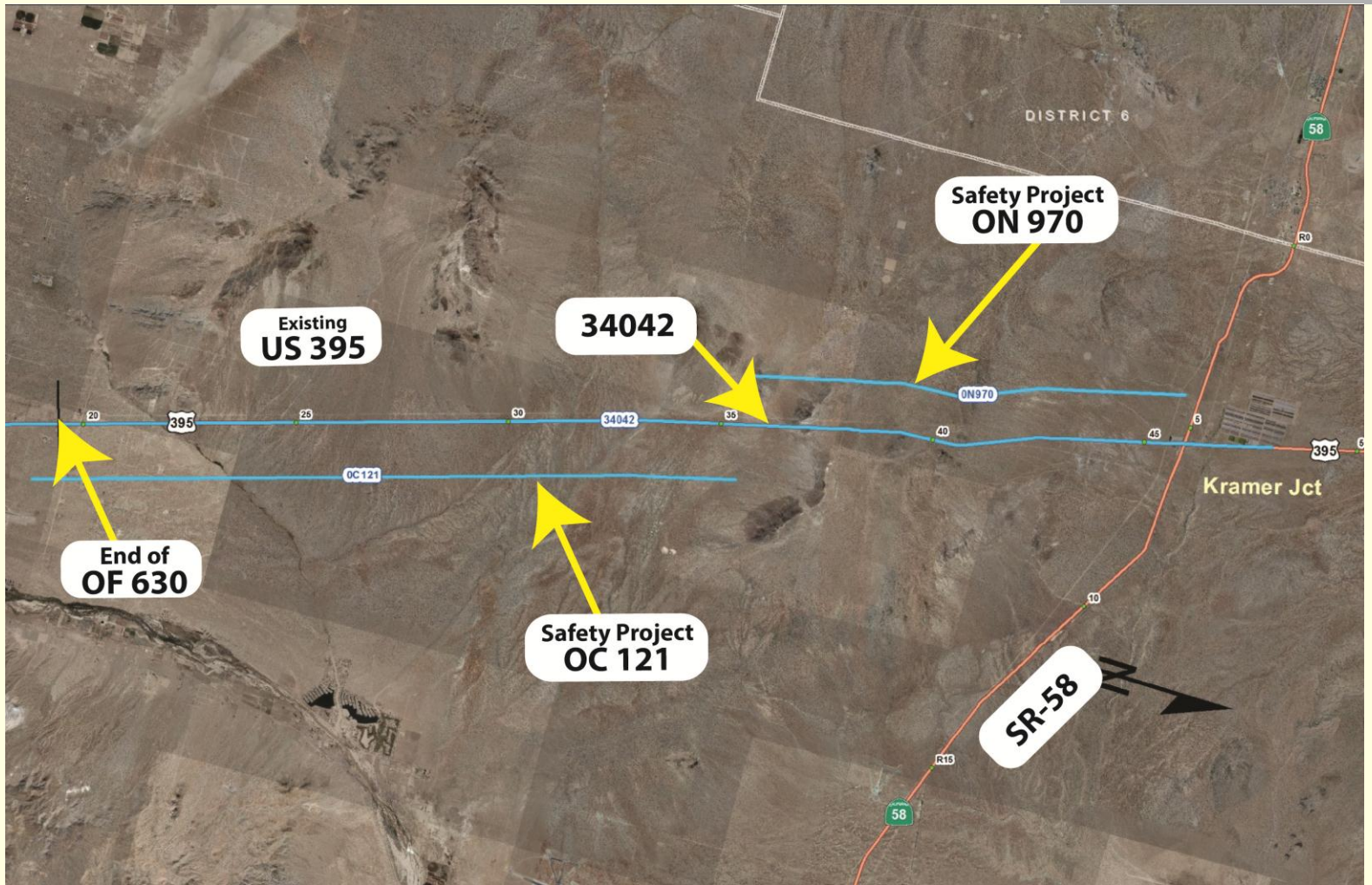
34042



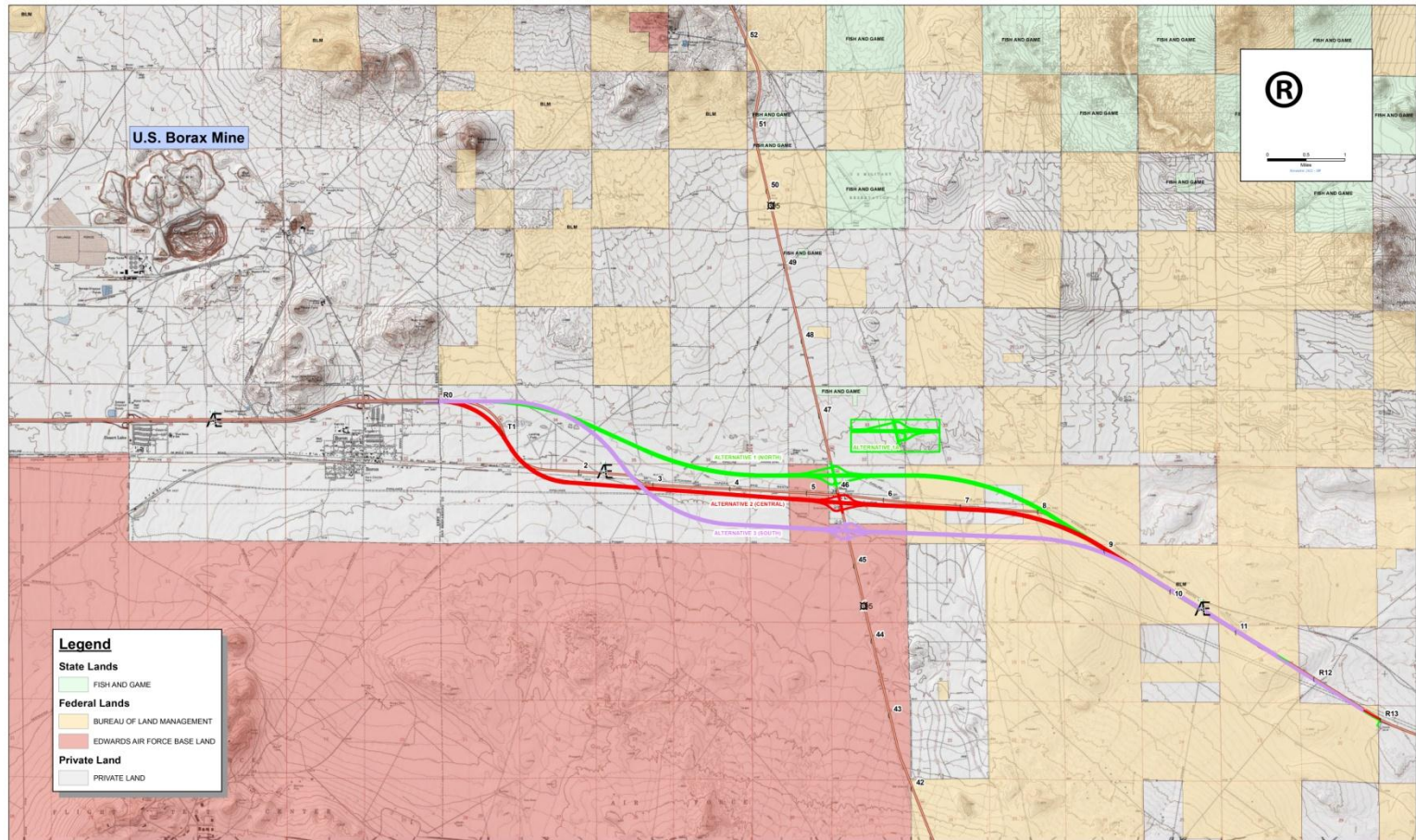
# 34042, OC121



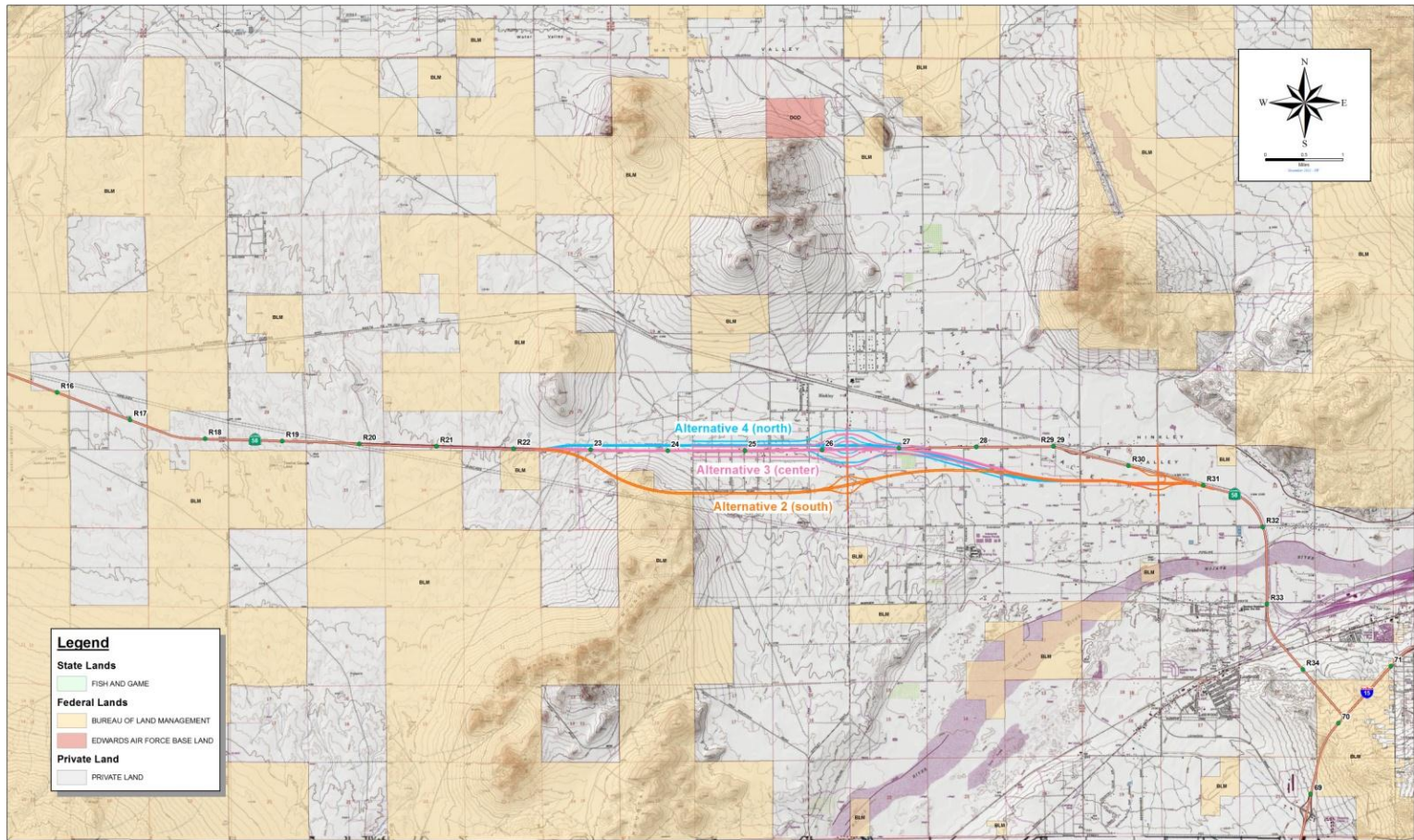
# 34042, OC121, ON970



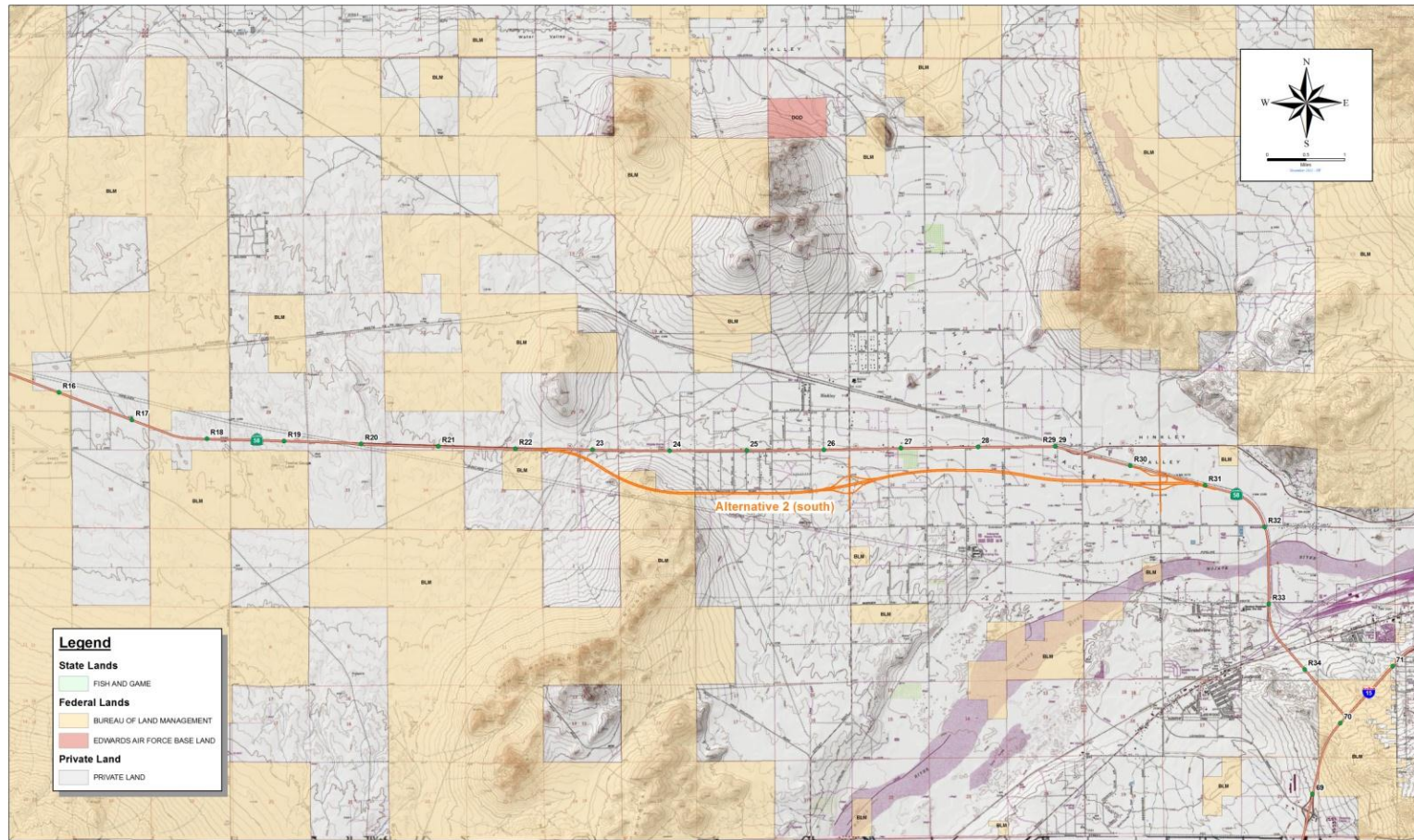
# SR-58 04351 @ Kramer Junction ALT's



# SR-58 04351 @ Hinkley, Alternatives



# Rte-58 04351 @ Hinkley, Alternatives





# All Current and Proposed projects.



## Schedules:

PROJECT	SCHEDULE
Widen US-395 - OF630	PS&E: 2013/14
Realign US-395 - 34041	PA&ED: On Hold
High Desert Corridor – 47170	PA&ED: June 2014
Realign US-395 - 34042	PA&ED: 2015
Widen US-395 - OC121	Under Construction
Widen US-395 - ON970	Construction: Nov. 2015
Realign Rte-58 - 34770	Construction: July 2017
Realign Rte-58 - 04351	Construction: June 2014