

NOTES

THIS EXHIBIT HAS BEEN PREPARED USING RECORD INFORMATION AND DOES NOT REPRESENT A CURRENT BOUNDARY SURVEY.

PREPARED BY:
 CORY J. KLEINE, P.L.S.
 PROFESSIONAL LAND SURVEYOR
 SMITH VALLEY, NEVADA

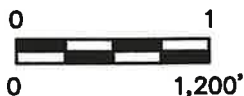
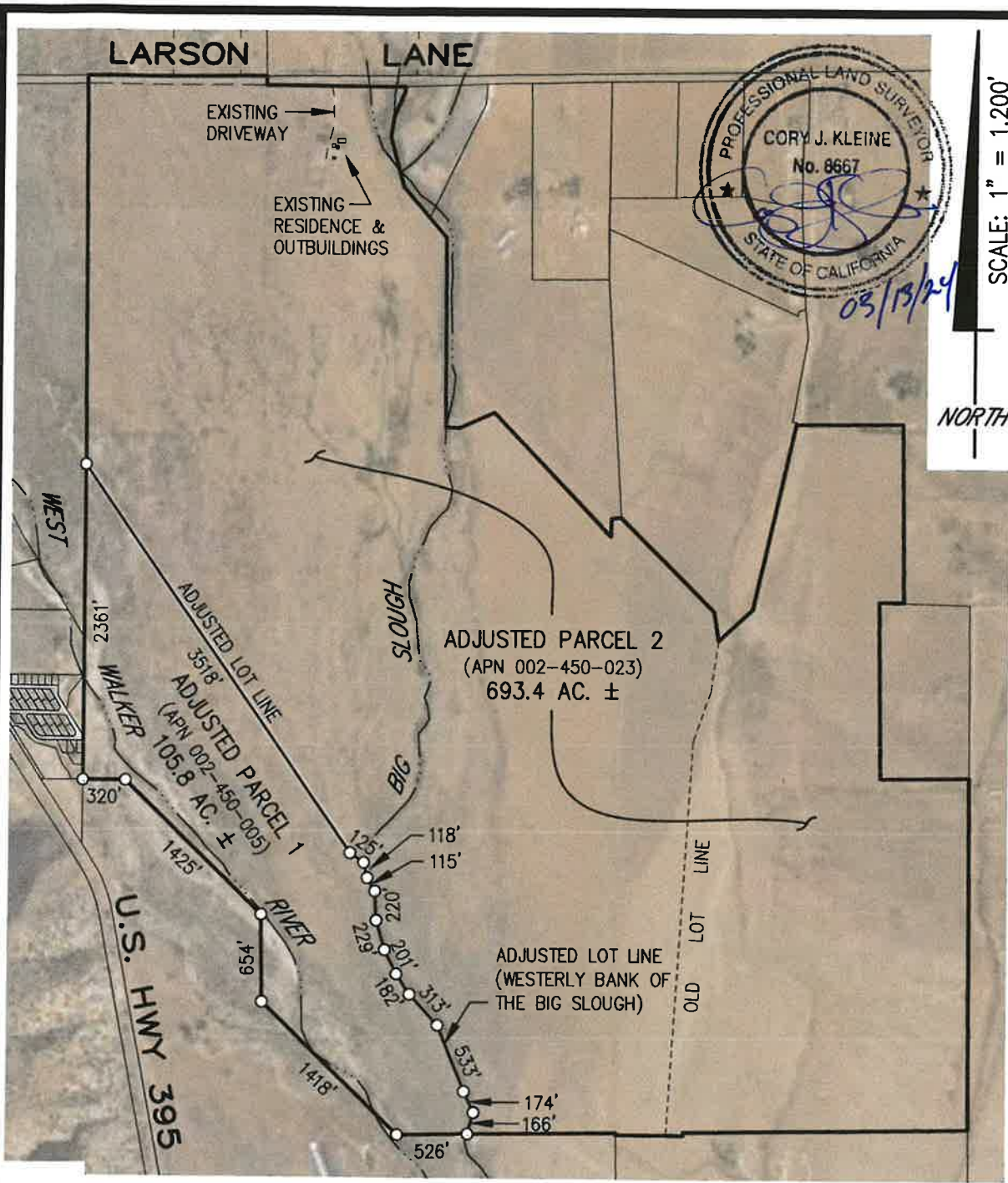


EXHIBIT
PROPOSED LOT LINE ADJUSTMENT
 FOR PARK RANCH HOLDINGS, LLC
 (APN 002-440-001 & 002-450-023)
 MONO COUNTY, CALIFORNIA



NOTES

THIS EXHIBIT HAS BEEN PREPARED USING RECORD INFORMATION AND DOES NOT REPRESENT A CURRENT BOUNDARY SURVEY.

PREPARED BY:
 CORY J. KLEINE, P.L.S.
 PROFESSIONAL LAND SURVEYOR
 SMITH VALLEY, NEVADA

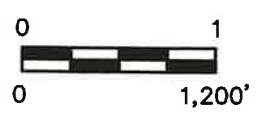


EXHIBIT
PROPOSED LOT LINE ADJUSTMENT
 FOR PARK RANCH HOLDINGS, LLC
 (APN 002-440-001 & 002-450-023)
 MONO COUNTY, CALIFORNIA