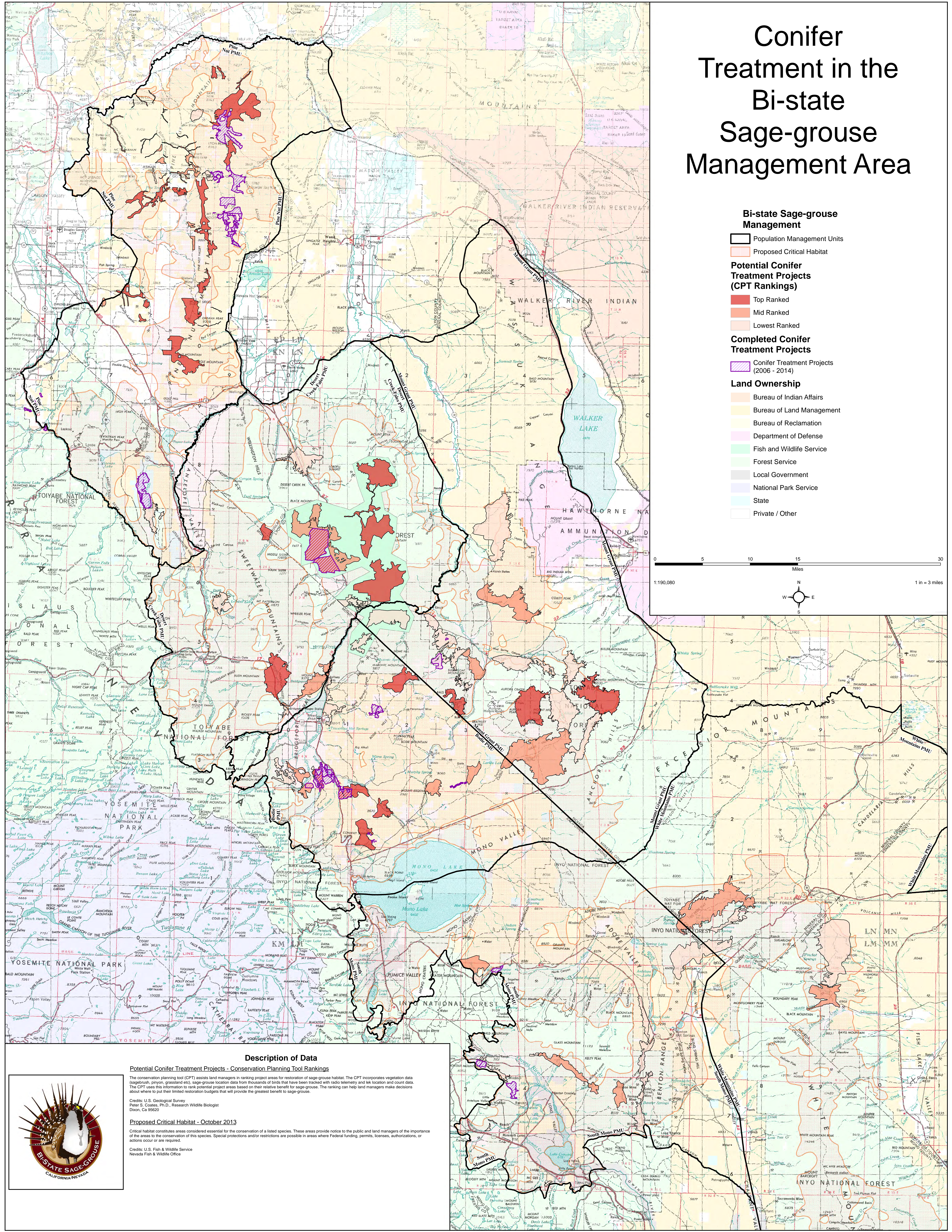


Conifer Treatment in the Bi-state Sage-grouse Management Area



Description of Data

Potential Conifer Treatment Projects - Conservation Planning Tool Rankings

The conservation planning tool (CPT) assists land managers in ranking project areas for restoration of sage-grouse habitat. The CPT incorporates vegetation data (sagebrush, piñon, grassland etc), sage-grouse location data from thousands of birds that have been tracked with radio telemetry and lek location and count data. The CPT uses this information to rank potential project areas based on their relative benefit for sage-grouse. The ranking can help land managers make decisions about where to put their limited restoration budgets that will provide the greatest benefit to sage-grouse.

Credits: U.S. Geological Survey
Peter S. Coates, Ph.D., Research Wildlife Biologist
Dixon, CA 95620

Proposed Critical Habitat - October 2013

Critical habitat constitutes areas considered essential for the conservation of a listed species. These areas provide notice to the public and land managers of the importance of the areas to the conservation of this species. Special protections and/or restrictions are possible in areas where Federal funding, permits, licenses, authorizations, or actions occur or are required.

Credits: U.S. Fish & Wildlife Service
Nevada Fish & Wildlife Office

