

Item available for public inspection in the Clerk's office during regular business hours (Monday – Friday, 9 AM – 5 PM)

April 8, 2025

Regular Meeting

**Item #7f. - 2025 Civic Center Presentation
by Paul Roten Public Works Director**

Mono County Civic Center

Construction Season 2025

Mammoth Lakes Projects

- Town of Mammoth Lakes Civic Center - ~\$28 million
- Mammoth Hospital North Wing - ~\$150 million
- Tavern Road Realignment
- Highway 203 Undercrossing resurfacing

Mammoth Lakes Town Hall



Town of Mammoth Lakes Civic Center



Town of Mammoth Lakes Civic Center



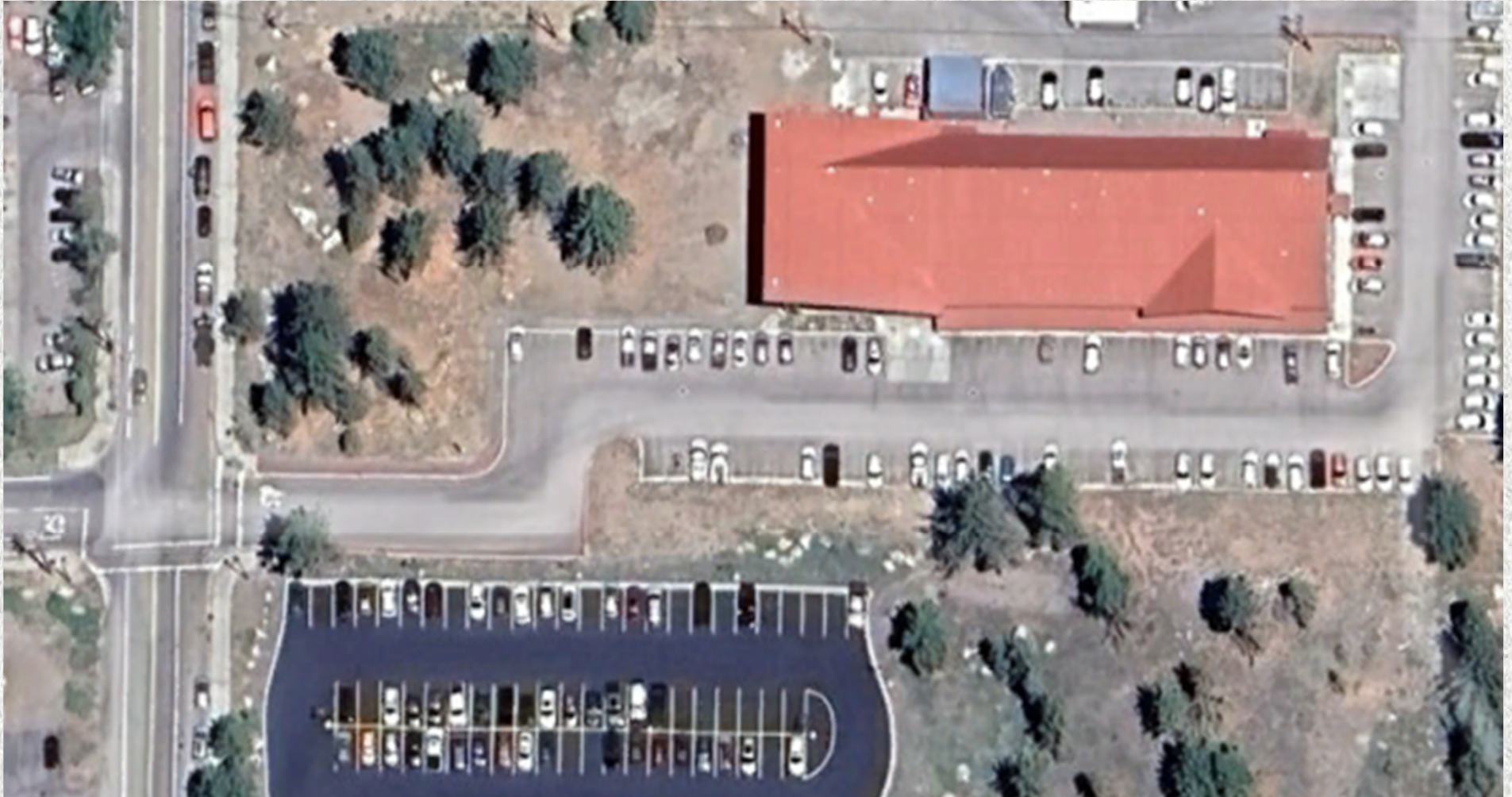
Mammoth Hospital North Wing



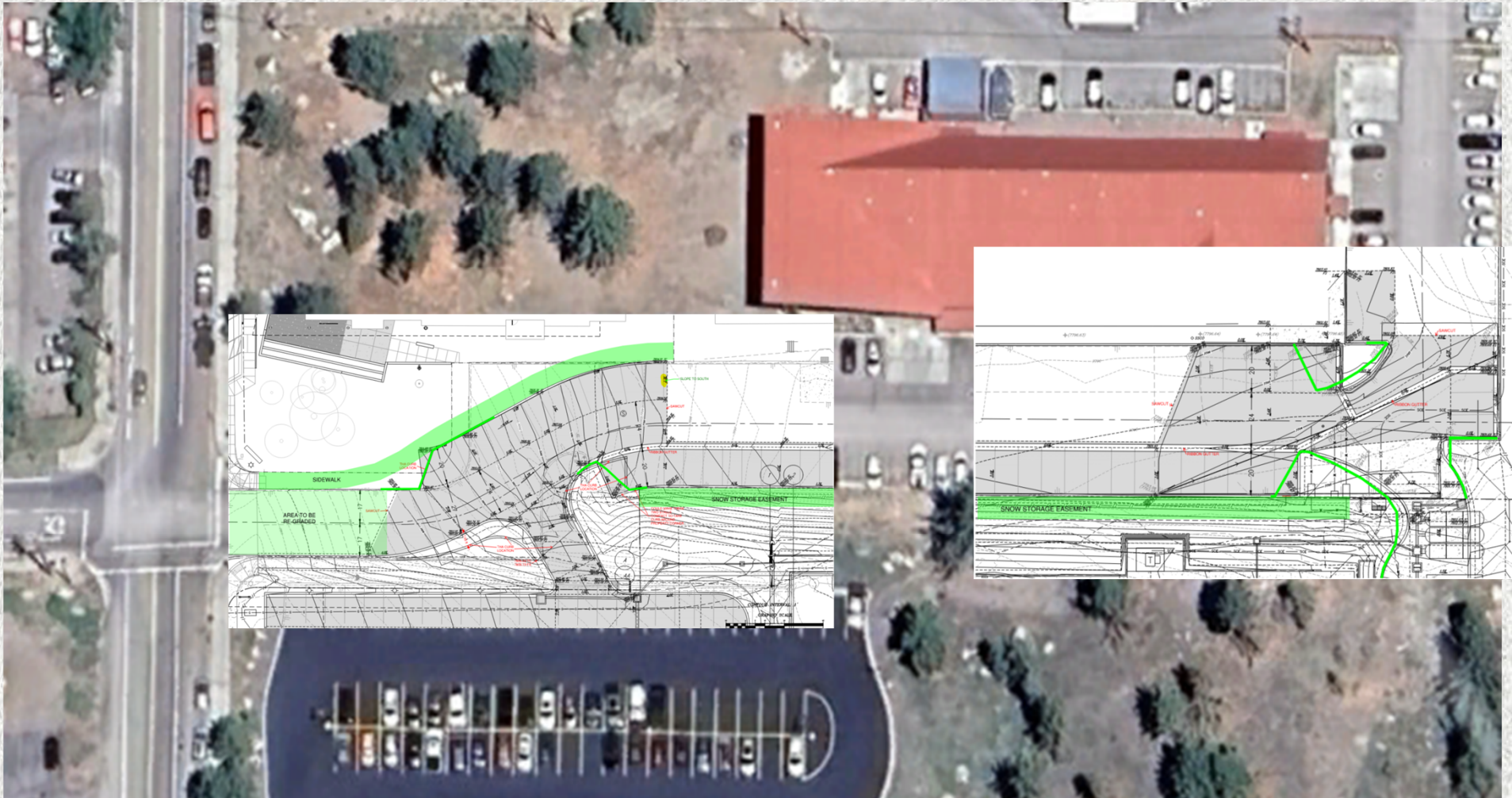
Highway 203 Undercrossing – 2025



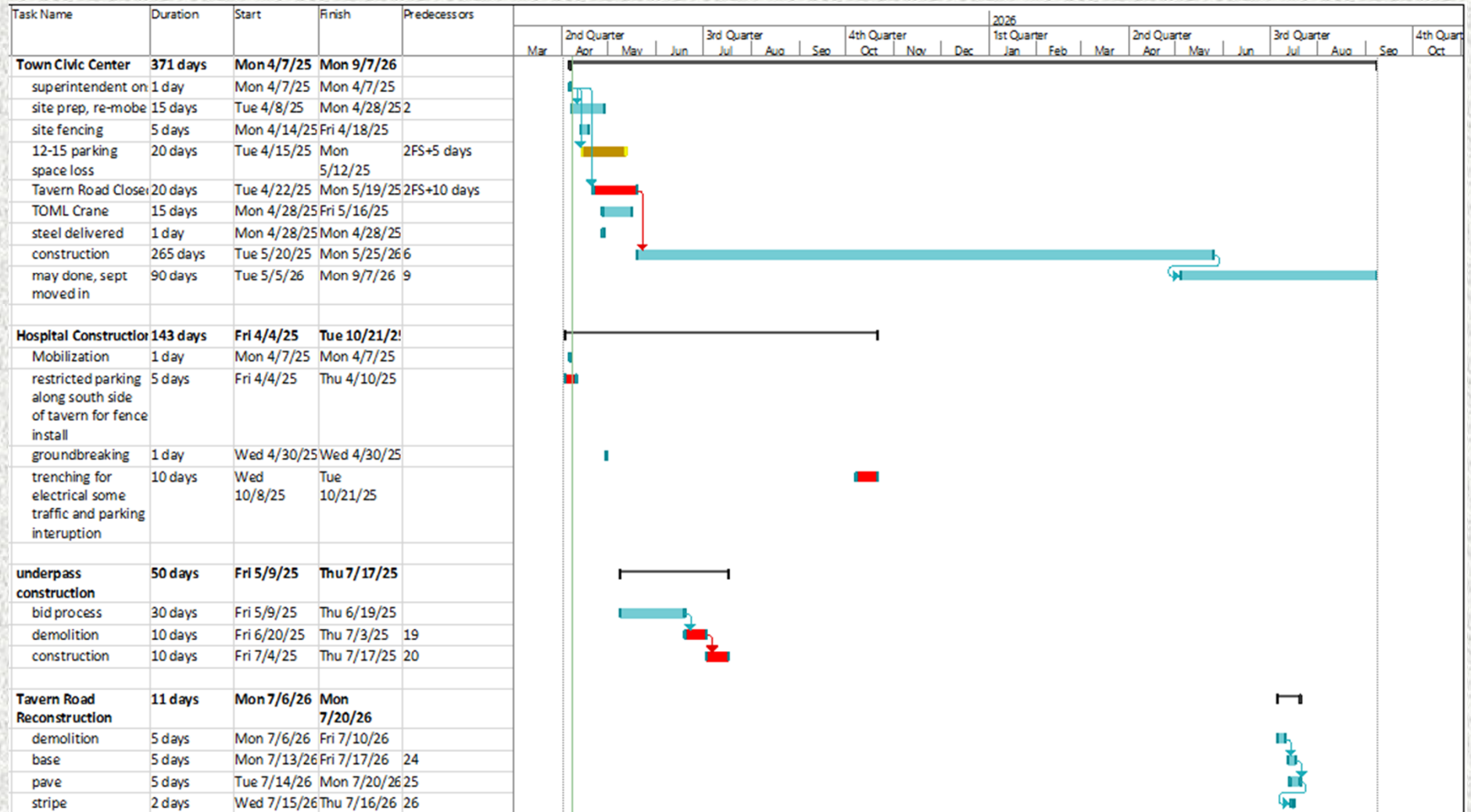
Tavern Road Realignment



Tavern Road Realignment - 2026



Rough schedule - Overall



Rough schedule - Hospital

ID	Task Mode	Task Name	Duration	Start	Finish	Predecessor
34		General Obligation Bond vote (with Presidential Election)	0 days	Tue 11/5/24	Tue 11/5/24	
35		Building Permit - Increment I Structural, Dry-in Envelope	10 days	Fri 3/21/25	Thu 4/3/25	33
36		Construction - Increment I PreWork - Site Utility Relocate, Excavation and Soil Retention	44 days	Fri 4/4/25	Wed 6/4/25	35
37		Construction - Increment I Structural, Dry-In Envelope	100 days	Thu 6/5/25	Wed 10/22/25	36
38		BUILDING F Dry-In	0 days	Wed 10/22/25	Wed 10/22/25	37
39		Construction Documents - Increment II Tenant Improvement	80 days	Fri 9/20/24	Thu 1/9/25	32
40		Hospital Sign-off Construction Documents	10 days	Fri 1/10/25	Thu 1/23/25	39
41		HCAI Plan Review - Increment II Tenant Improvement	130 days	Fri 1/24/25	Thu 7/24/25	40
42		HCAI Building Permit - Increment II Tenant Improvement	10 days	Fri 7/25/25	Thu 8/7/25	41
43		Construction - Increment II Tenant Improvement	200 days	Fri 8/8/25	Thu 5/14/26	42
44		BUILDINGS F & G - HCAI Occupancy	25 days	Fri 5/15/26	Thu 6/18/26	43
45		BUILDING F - CDPH Licensing	40 days	Fri 5/15/26	Thu 7/9/26	43
46		Staff and Stock New North Wing	15 days	Fri 6/19/26	Thu 7/9/26	44
47		GO LIVE - NORTH WING	1 day	Fri 7/10/26	Fri 7/10/26	45,46,44
48		Increments I and II - HCAI Close-out	30 days	Mon 7/13/26	Fri 8/21/26	47
49						
50		PHASE 2 - INCREMENT III - EXISTING BUILDING A DEMO	501 days	Fri 1/10/25	Fri 12/11/26	
51		Demolition Safe-off Planning	20 days	Fri 1/10/25	Thu 2/6/25	39
52		Hospital Sign-off on Safe-off Plan	10 days	Fri 2/7/25	Thu 2/20/25	51
53		Demolition Documents - Design Development and Preconstruction	20 days	Fri 2/21/25	Thu 3/20/25	52,39
54		Hospital Sign-off Demolition Plan DD	10 days	Fri 3/21/25	Thu 4/3/25	53
55		Incorporate Hospital Comments	10 days	Fri 4/4/25	Thu 4/17/25	54
56		Demolition Documents - Construction Documents	40 days	Fri 4/4/25	Thu 5/29/25	54
57		Hospital Sign-off Demolition Plan CD	10 days	Fri 5/30/25	Thu 6/12/25	56
58		HCAI Plan Review - Increment III Demolition	90 days	Fri 6/13/25	Thu 10/16/25	57
59		HCAI Demolition Permit - Increment III	10 days	Fri 10/17/25	Thu 10/30/25	58
60		Relocate Staff and Services to North Wing	10 days	Mon 7/13/26	Fri 7/24/26	47
61		Safe-off and Demolition	60 days	Mon 7/27/26	Fri 10/16/26	59,60
62		HCAI PERMIT SIGN-OFF	10 days	Mon 10/19/26	Fri 10/30/26	61
63		Increment III - HCAI Close-out	30 days	Mon 11/2/26	Fri 12/11/26	62
64						
65		PHASE 3 - INCREMENT IV - NEW BUILDING A	636 days	Fri 6/13/25	Fri 11/19/27	
66		Construction Documents - Schematic Design	60 days	Fri 6/13/25	Thu 9/4/25	57
67		Hospital Sign-off SD	10 days	Fri 9/5/25	Thu 9/18/25	66
68		Construction Documents - Design Development and Preconstruction	40 days	Fri 9/19/25	Thu 11/13/25	67
69		Hospital Sign-off DD	10 days	Fri 11/14/25	Thu 11/27/25	68
70		Construction Documents - Construction Docs	80 days	Fri 11/28/25	Thu 3/19/26	69
71		TOML Plan Review	130 days	Fri 3/20/26	Thu 9/17/26	70
72		TOML Building Permit - Increment IV	10 days	Fri 9/18/26	Thu 10/1/26	71
73		Construction - Structural, Dry-In Envelope	100 days	Mon 11/2/26	Fri 3/19/27	62,72
74		NEW BUILDING A Dry-In	0 days	Fri 3/19/27	Fri 3/19/27	73
75		Construction - Tenant Improvement	120 days	Mon 3/22/27	Fri 9/3/27	74
76		BUILDING A - HCAI Occupancy	25 days	Mon 9/6/27	Fri 10/8/27	75
77		BUILDING A - CDPH Licensing	40 days	Mon 9/6/27	Fri 10/29/27	75
78		Staff and Stock New Building A	15 days	Mon 10/11/27	Fri 10/29/27	76
79		GO LIVE - BUILDING A	1 day	Mon 11/1/27	Mon 11/1/27	78
80		Increment IV - HCAI Close-out	30 days	Mon 10/11/27	Fri 11/19/27	76

Parking problems and options

