

07/19/2011

**ADDITIONAL
DOCUMENTS**

ITEM #8A

**REDISTRICTING
ITEM**

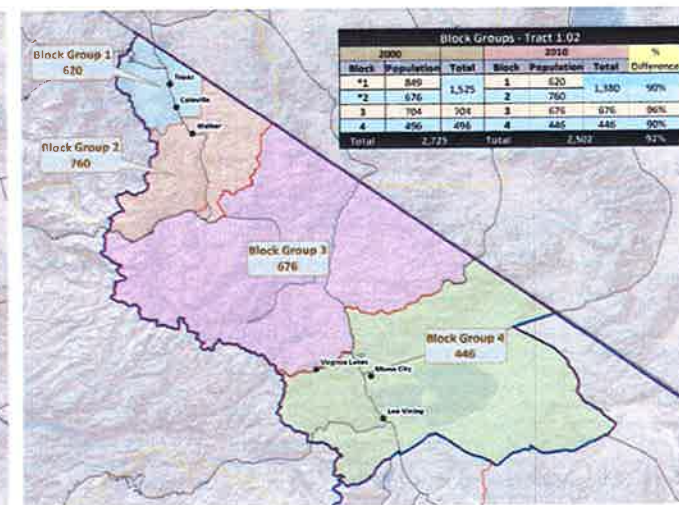
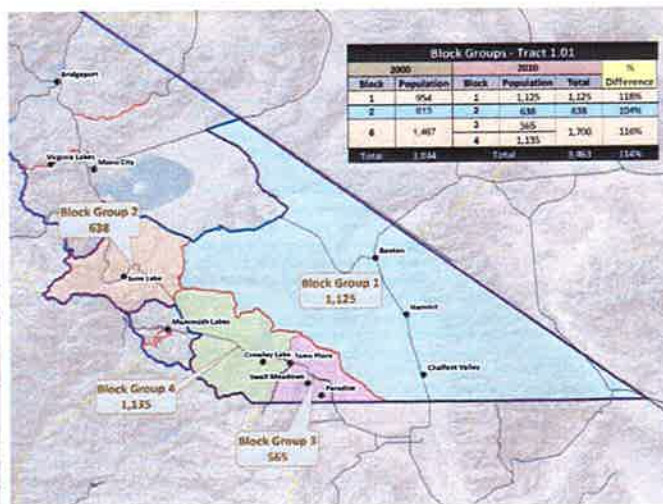
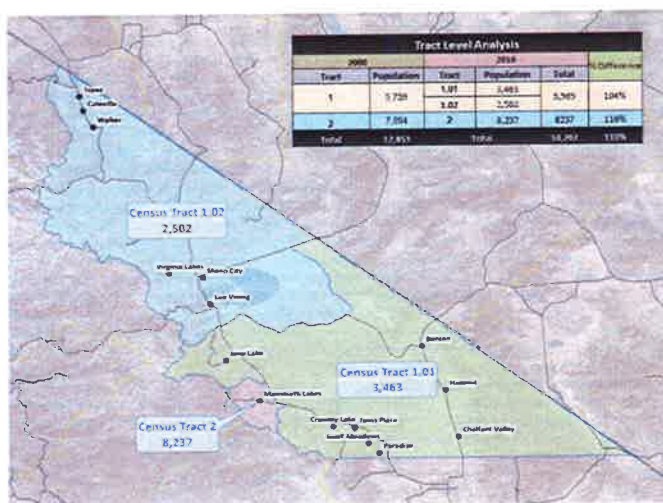
2010 Mono County Redistricting Committee Findings & Alternatives



#8a

Population Change : 2000 - 2010

- **Mono County as a whole grew by 10% to 14,202**
 - Most of the growth took place within the Town of Mammoth Lakes, which grew 16% to 8,237
 - The southern portion of the County grew 14% to 3,463
 - The northern portion of the County shrank 8% to 2,502



Census Implications on Redistricting

- Population and demographic data within each Census block is interpreted relative to existing Supervisorial Districts using GIS

District	Supervisor	2000 Pop.	2010 Pop.
1	Larry Johnston	2,571	3,556
2	Duane "Hap" Hazard	2,423	2,828
3	Vikki Magee-Bauer	2,567	2,043
4	Tim Hansen	2,718	2,498
5	Byng Hunt	2,574	3,277
Total		12,853	14,202
Distribution Average		2,570	2,840

- Each district must have a population as close to 2,840 as possible (Elections Code)
- There cannot be more than a 10% spread between the largest and smallest population districts (Equal Protection)
- 10% of 2,840 = 284 people

Public Engagement

- **Publicity and Announcements**
- **Meetings**
- **Outreach by Committee Members**

Public Community Meetings

- **The following public meetings were held**
 - 05/16/2011 : Mammoth Lakes (organizational meeting)
 - 05/23/2011 : Mammoth Lakes
 - 05/25/2011 : Lee Vining
 - 06/01/2011 : June Lake
 - 06/13/2011 : Benton
 - 06/15/2011 : Bridgeport
 - 06/20/2011 : Mammoth Lakes
 - 06/22/2011 : Walker
 - 06/27/2011 : Crowley Lake
 - 06/29/2011 : Mammoth Lakes (selection of the 3 Alternatives)

Public Meeting Focus

- **Except for the first and last, each meeting followed the same general format:**
 - The Committee welcomed the public & introduced themselves
 - Public comment was invited
 - Minutes of previous meetings were approved
 - An update on meeting schedules and locations was provided to the public
 - County Counsel provided an overview of the redistricting laws
 - IT Staff provided an overview of the 2010 Census results and redistricting implications
 - Concepts under consideration were reviewed, commented on by the public, and debated by the Committee Members
 - The Committee gave instructions for the fine tuning of particular Concepts and/or the development of new Concepts based on the comments received and discussions held

Other Outreach

- **County Staff** (John Vallejo & Nate Greenberg) **also made public presentations to:**
 - Mammoth Lakes Noontime Rotary Club
 - Mammoth Lakes Sunrise Rotary Club
 - Mammoth Lakes Chamber of Commerce
 - Mammoth Lakes Town Council (John Vallejo)
- **Mono County IT developed a website dedicated to redistricting effort** (www.monocounty.ca.gov/Redistricting) **containing:**
 - Detailed information on process, meetings, and documents
 - Interactive maps for each developed Concept/Alternative
 - Public interaction/commenting ability for comments/general

Redistricting : Discretionary Factors

- **“in establishing the boundaries of the districts the Board may give consideration to the following factors:”**
 - **Topography**
 - **Geography**
 - **Cohesiveness, contiguity, integrity, and compactness of territory**
 - **Community of interests of the districts.**

Considerations, Priorities & Conclusions

- **Identified Community Interests**
 - Economy:
 - Agricultural (generally)
 - Tourism Economies
 - » Ski Area
 - » Fishing
 - » Other Recreation
 - » Service Industry
 - School Districts
 - Watersheds
 - Racial Groups
 - Proximity to Medical Services
 - Proximity to Retail Services

Considerations, Priorities & Conclusions

- **Public Concerns & Feedback**

- Each community generally tended to express a concern about the political balance of power between Mammoth and the Unincorporated areas of the County
- No community wanted to be split
- Residents of the Sierra Valley neighborhood in Mammoth wanted that area to be placed within one district
- A massive geographical territory within one district would be hard and/or impossible for one supervisor to effectively represent
- Any one Supervisor should not have too many RPACs to represent

Alternative A

- **Description**

- 3 Mammoth Districts, 2 Unincorporated Districts
- The unincorporated area of the County is divided into an east/west split.

- **Pros:**

- » Does do an excellent job of representing the communities of interest. Agriculture; Front Country Tourism; and Mammoth;
 - » Reflects well the population distribution;
 - » Doesn't split communities; divides Mammoth logically; maintains a strong ethnic minority district.

- **Cons:**

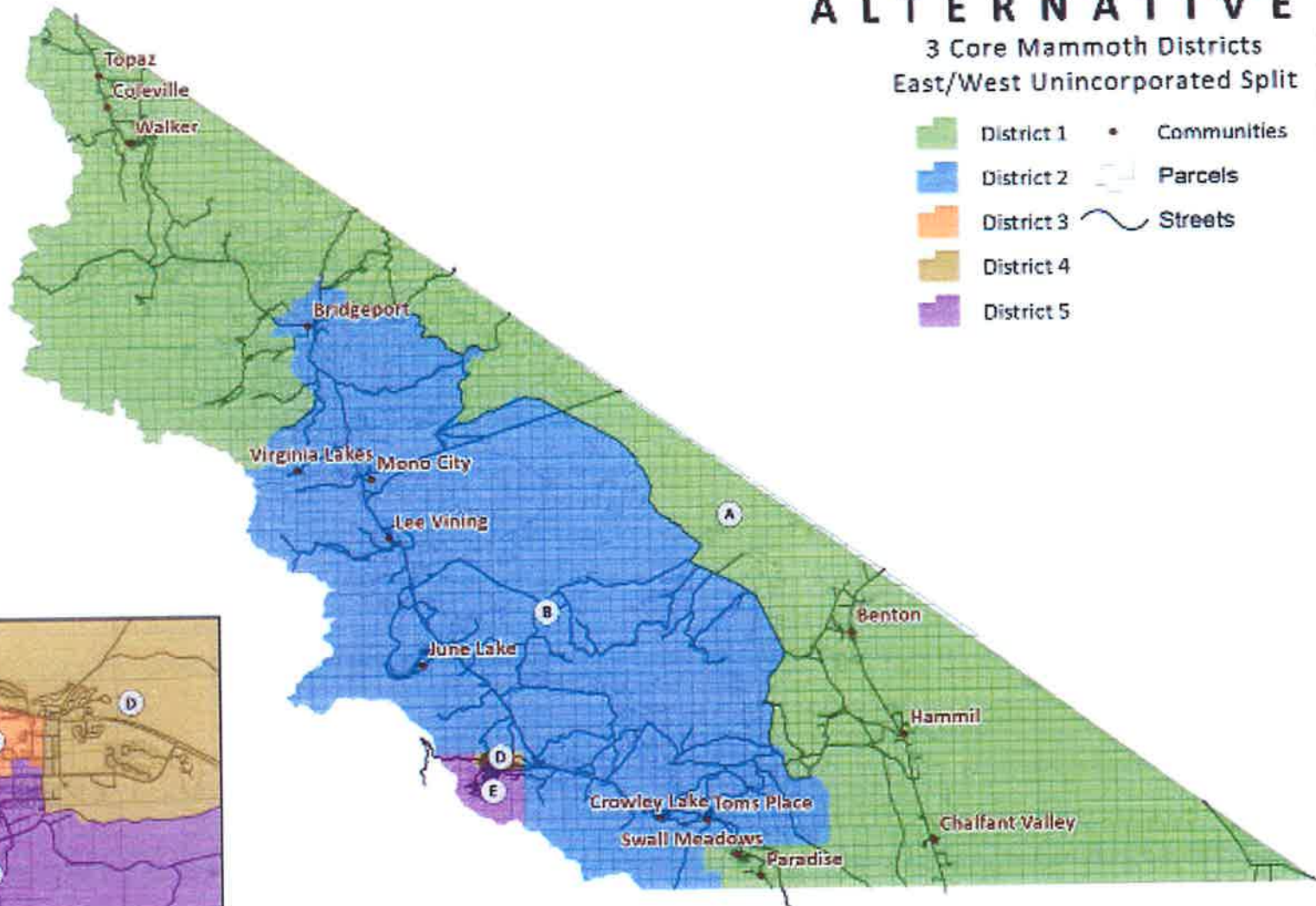
- » Large size of District 1 makes managing the district highly difficult, especially in the winter months; the "tourism district" is also a difficult territory to manage;
 - » Splits Crowley away from Swall Meadows and Paradise;
 - » Bridgeport has more in common with the agricultural District 1 than with the front country/tourism area;
 - » Under represents rural communities because they are so geographically removed from each other that they will not form a consensus and they have different interests aside from just agriculture;
 - » People in the unincorporated/ag. areas did not like it;
 - » Was designed to satisfy a political motive for county government to be controlled by Mammoth;
 - » May exacerbate the "us v. them" mentality in the County.



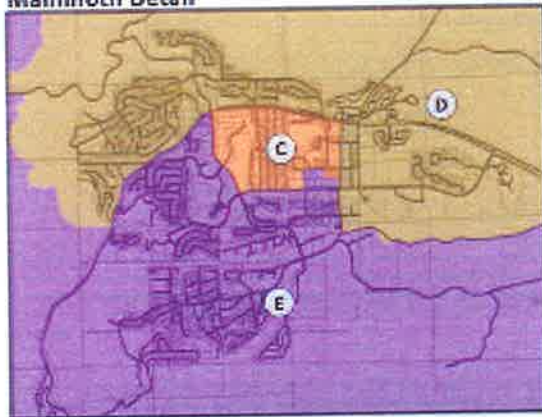
ALTERNATIVE A

3 Core Mammoth Districts East/West Unincorporated Split

- District 1
- District 2
- District 3
- District 4
- District 5
- Communities
- ▭ Parcels
- ~ Streets



Mammoth Detail



District	Population Distribution			White		Hispanic		Black		American Indian		Asian		Mammoth		Unincorp.	
	Population	Deviation	% Deviation	Pop	%	Pop	%	Pop	%	Pop	%	Pop	%	Pop	%	Pop	%
District A	2952	112	3.943662	2508	84.959	411	13.923	13	0.4404	158	5.3523	30	1.0163	0	0%	2952	100%
District B	3016	176	6.197183	2546	84.416	579	19.198	5	0.1658	95	3.1499	34	1.1273	0	0%	3016	100%
District C	2748	-92	-3.239437	2022	73.581	1242	45.197	11	0.4003	18	0.655	25	0.9098	2748	100%	0	0%
District D	2729	-111	-3.908451	2282	83.62	885	32.429	8	0.2931	22	0.8062	39	1.4291	2729	100%	0	0%
District E	2757	-83	-2.922535	2339	84.839	645	23.395	10	0.3627	9	0.3264	64	2.3214	2757	100%	0	0%

This map is for conceptual planning purposes only and does not represent official boundaries or conclusions.

Alternative B

- **Description**

- 2 Core Mammoth, 1 Core Unincorporated, 2 Split Districts
- District D moves into Mammoth and District C into the Mono Basin

- **Pros:**

- » Population spread is the tightest among the 3 alternatives;
- » Maintains a strong ethnic minority district within Mammoth;
- » Mammoth maintains potentially strong representation on the Board reflective of its population;
- » Provides the balance of political power which forces a discussion between the unincorporated communities and Mammoth;
- » Maintains the integrity of outlying communities;
- » Reunites the Mono Basin and June Lake;
- » Gives a more natural divide to watersheds and basins;
- » Generally easier to manage in winter than the other concepts;
- » Does not split the Mountain properties (Ski Areas).
- » Provides an opportunity within one district for portions of Mammoth to work with the unincorporated areas of Bridgeport and the Antelope Valley.
- » The Communities of Mammoth, Bridgeport, and the Antelope Valley share a reliance, in part, on recreation and tourism.

- **Cons:**

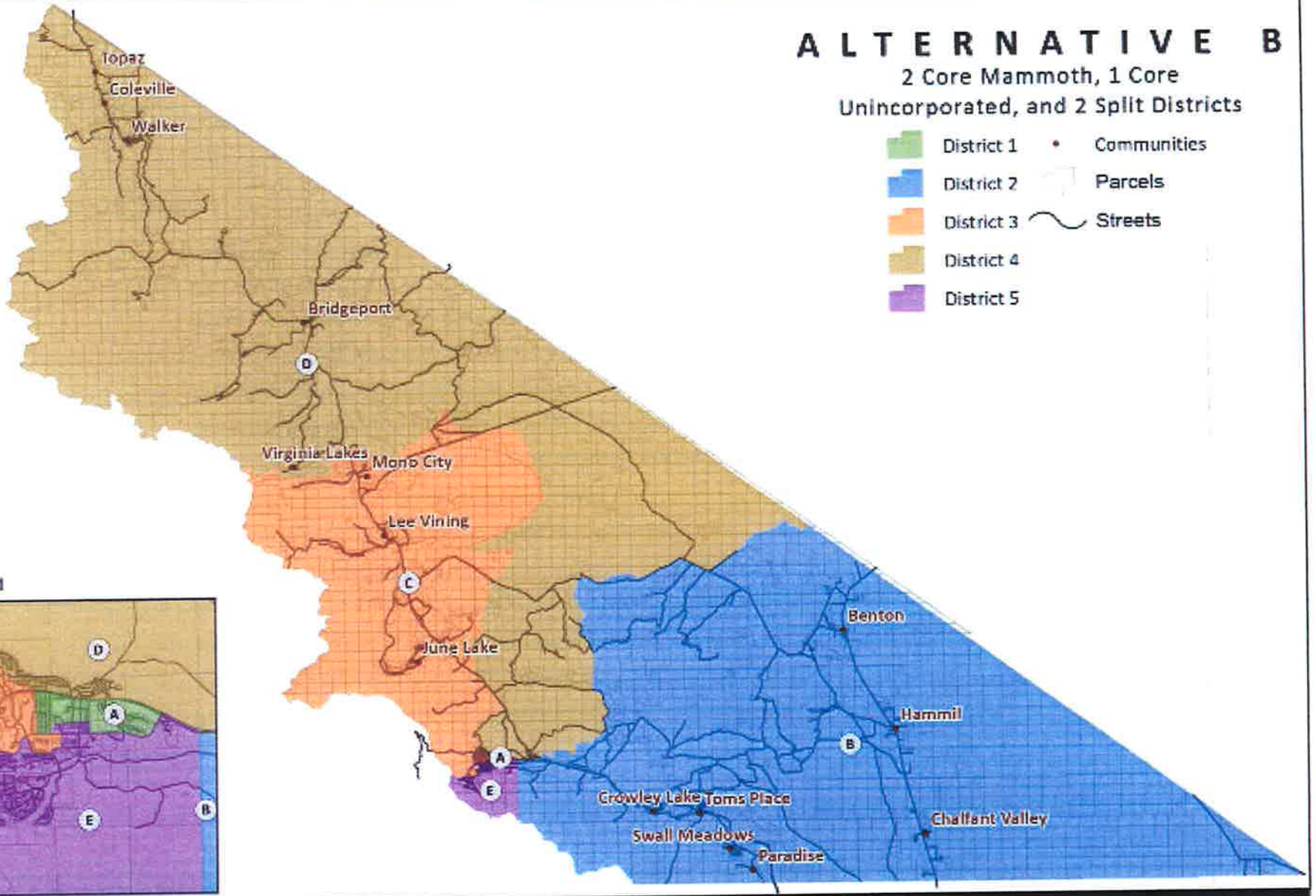
- » Splits Mammoth into 4 districts.
- » Combines in one district Mammoth, Bridgeport, and the Antelope Valley;
- » The north-county district reaches into Mammoth but they do not share any particular community of interest.



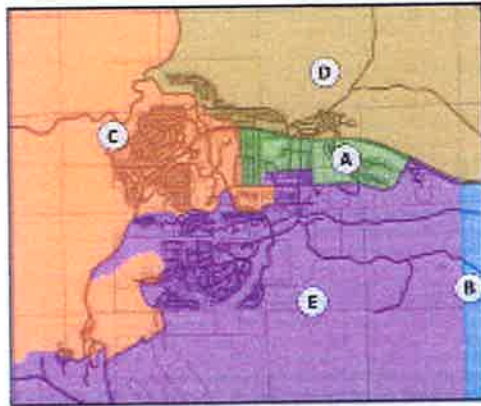
ALTERNATIVE B

2 Core Mammoth, 1 Core Unincorporated, and 2 Split Districts

- District 1
- District 2
- District 3
- District 4
- District 5
- Communities
- Parcels
- Streets



Mammoth Detail



District	Population Distribution			White		Hispanic		Black		American Indian		Asian		Mammoth		Unincorp.	
	Population	Deviation	% Deviation	Pop	%	Pop	%	Pop	%	Pop	%	Pop	%	Pop	%	Pop	%
District A	2889	49	1.73	2090	72.34	1354	46.87	10	0.35	28	0.97	26	0.9	2889	100%	0	0%
District B	2820	-20	-0.7	2450	86.88	311	11.03	5	0.18	100	3.55	44	1.56	0	0%	2820	100%
District C	2857	17	0.6	2471	86.49	603	21.11	7	0.25	50	1.75	24	0.84	1810	63%	1047	37%
District D	2801	-39	-1.37	2382	85.04	535	19.1	16	0.57	115	4.11	24	0.86	734	26%	2067	74%
District E	2835	-5	-0.18	2304	81.27	959	33.83	9	0.32	9	0.32	74	2.61	2835	100%	0	0%

This map is for conceptual planning purposes only and does not represent official boundaries or conclusions.

Alternative C

- **Description**

- 1 Core Mammoth District, 4 Radiating Districts that touch Mammoth

- **Pros:**

- » Most common sense approach with regard to watershed lines;
- » Keeps major groups of communities of interest together (e.g. Mono Basin and June Lake; Crowley, Tom's Place, Swall Meadows, and Paradise; Tri-Valley Communities; Antelope Valley Communities);
- » Maintains the political opportunity for Mammoth to have a majority, especially if the population trends we saw in this census data continue throughout the next decade;
- » The split districts give Mammoth and the unincorporated areas an opportunity to work together.
- » The Communities of Mammoth, Bridgeport, and the Antelope Valley share a reliance, in part, on recreation and tourism.

- **Cons:**

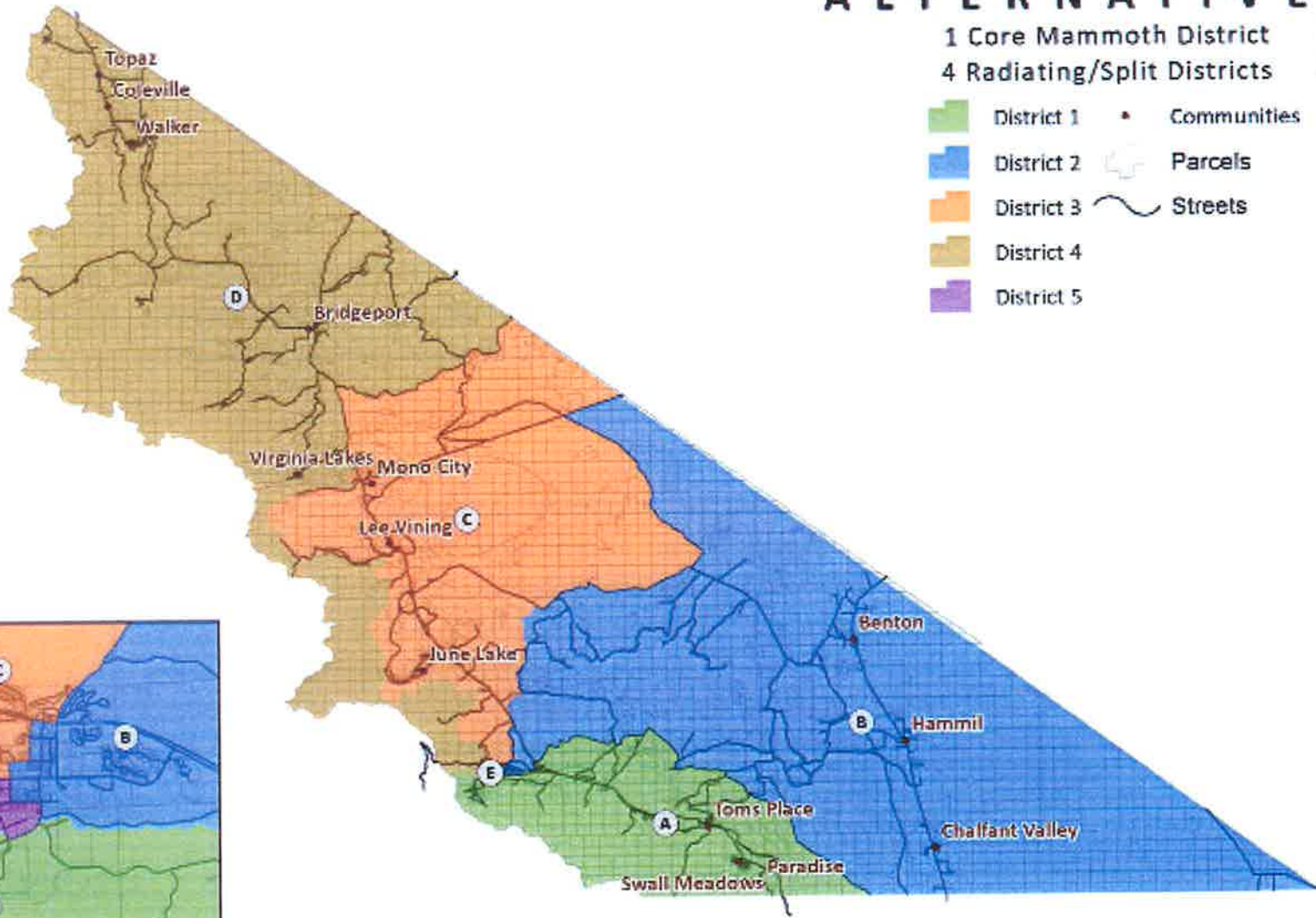
- » Combines Mammoth with the Antelope Valley, which are not communities of common interest.
- » Combines Tri-Valley with Mammoth, not communities of common interest.
- » Combines communities that have significant geographical separations;
- » Carves up more of Mammoth neighborhoods, particularly the center of town.
- » Puts the two resorts in separate districts.



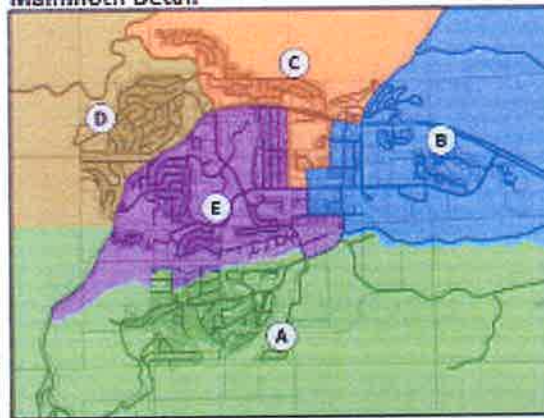
ALTERNATIVE C

1 Core Mammoth District
4 Radiating/Split Districts

- District 1
- District 2
- District 3
- District 4
- District 5
- Communities
- Parcels
- Streets



Mammoth Detail



District	Population Distribution			White		Hispanic		Black		American Indian		Asian		Mammoth		Unincorp.	
	Population	Deviation	% Deviation	Pop	%	Pop	%	Pop	%	Pop	%	Pop	%	Pop	%	Pop	%
District A	2798	-42	-1.478873	2446	87.42	421	15.046	7	0.2502	21	0.7505	59	2.1086	1101	39%	1697	61%
District B	2868	28	0.985915	2222	77.476	1081	37.692	5	0.1743	100	3.4868	37	1.2901	1740	61%	1128	39%
District C	2933	93	3.274648	2298	78.35	847	28.878	10	0.3409	56	1.9093	33	1.1251	1888	64%	1045	36%
District D	2855	15	0.528169	2484	87.005	490	17.163	17	0.5954	114	3.993	25	0.8757	790	28%	2065	72%
District E	2748	-92	-3.239437	2247	81.769	923	33.588	8	0.2911	11	0.4003	38	1.3828	2748	100%	0	0%

This map is for conceptual planning purposes only and does not represent official boundaries or conclusions.

Concept Eliminations

- **Unable to meet the population target legal requirement**
- **Too similar to other, better Concepts**
- **Lacked Committee Support**

Facts Not Considered

- **Domicile of sitting Supervisors**
- **Voter Registration**
- **Voter Turn-out in Prior Elections**

Major Issues

- **Reluctance to Split Unincorporated Communities**
- **Requirement to Divide Mammoth**
- **Political Control of the Board of Supervisors**
- **Perception of the Agricultural/Tourism Division of the Unincorporated County**
- **Community of Interest**
 - (i) Racial Discrimination
 - (ii) Mammoth vs. Unincorporated
 - (iii) Unincorporated vs. Unincorporated

Alternative Selection Vote

Concepts	Voters	Total Votes
A1	Harper/Taylor,B/Schaefer/ Carmichael/Kitts/Taylor,T/Phelps	7
B1	Harper/Taylor,B/Miller/Peters/ Carmichael/Phelps/Morgan/ Schaefer	8
B2	Schaefer/Carmichael/Taylor,T/ Phelps	4
B3	Miller/Morgan/Peters	3
C1	Kitts	1
C2	Harper/Taylor,B/Miller/Kitts/ Taylor,T/Morgan/Peters	7
D1		0

Redistricting Advisory Committee

Individual Input

Bob Peters, Chair
(Bridgeport)

Bill Taylor, Vice-Chair
(Mammoth Lakes)

Chris Carmichael (Mammoth Lakes)

Brent Harper (Mammoth Lakes)

Cindy Kitts (Benton)

Sally Miller (Lee Vining)

Rob Morgan (June Lake)

Rick Phelps (Crowley)

Bob Schaefer (Mammoth Lakes)

Tony Taylor (Mammoth Lakes)