

06/21/2011

**ADDITIONAL
DOCUMENTS**

ITEM #9B

ECON. DEVELOP.

FISH & GAME

UPDATE

FISHERIES MANAGEMENT INFORMATION FOR 2011:

21 June 2011

To: Mono County Board of Supervisors

From : Department of Fish and Game – Inland Deserts Region
Brad Henderson, Senior Environmental Scientist, Bishop (760) 873-4412

2011 Hatchery Status and Stocking Objectives:

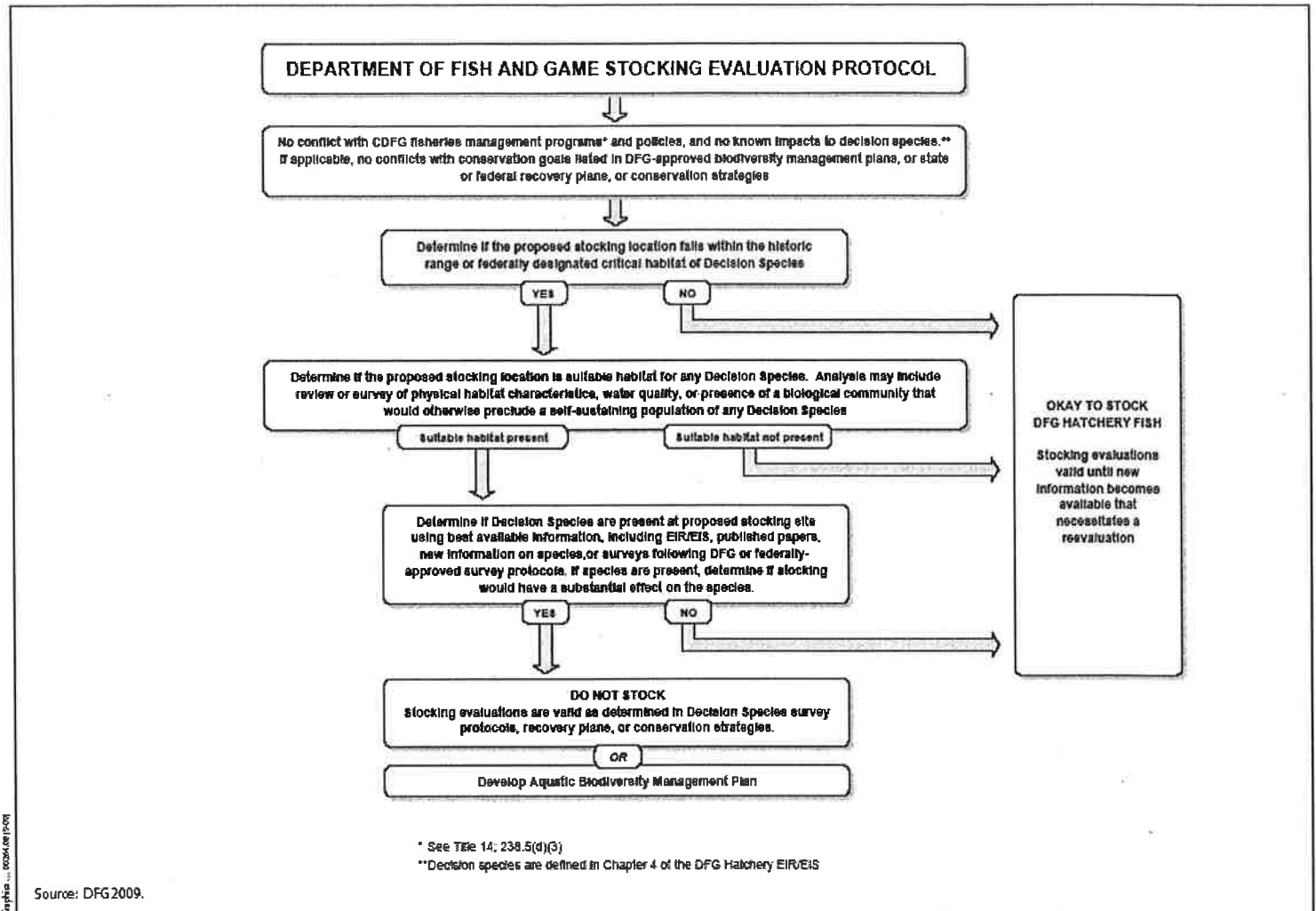
Hot Creek, Fish Springs and Black Rock Hatchery production continue to work towards meeting 2011 stocking allotment objectives for Mono County waters. Mt. Whitney hatchery is permanently closed due to the July 2008 flood event, obsolescence, and source water disease concerns. Brood stock and associated operations previously performed at Mt. Whitney have been reassigned to other state hatcheries. Adjustments remain in effect to replace allotment reductions from Hot Creek due to New Zealand mud snail at the Hatchery.

2010 Hatchery/Stocking Environmental Impact Report/Environmental Impact Statement:

DFG responded to a legal action challenging its hatchery and stocking operations, and in January 2010, completed an Environmental Impact Report/Environmental Impact Statement (EIR/EIS) that considers species and habitats affected by hatchery-raised trout. One of the conditions of the EIR/EIS is that each location to be planted throughout California must go through a Pre-Stocking Evaluation (PSE) protocol. This evaluation requires DFG to consider impacts to sensitive or listed species at each stocking location resulting from the stocking of trout. PSE's were completed in 2010 for all DFG Mono County allotments.

Private stocking permits must also go through the PSE process. This process is easiest when private stocking applications focus on waters that are already stocked by DFG, with fish species already approved in an existing PSE.

- EIR/EIS is the legal basis for stocking to continue in California and it must be implemented from now on.
- Pre-Stocking Evaluations (PSE's) focus on about 85 "Decision Species" discussed in EIR/EIS. Steps for completing PSE's follow on the next page.
- Once approved, a stocking location stays approved for five years absent new information.
- In Mono County, the species with the most potential interaction with stocking and not previously addressed in relation to fisheries management is the willow flycatcher.



**Figure K-1
DFG Trout and Inland Salmon Stocking Evaluation Protocol**

Hatchery EIR Discussions with U.S. Fish and Wildlife Service (USFWS)

The USFWS, the federal lead agency for the Hatchery EIR/EIS has advocated for reduced stocking of non-native trout within the historic range of Lahontan cutthroat trout, a federally listed species. The primary concern is competition and hybridization between LCT and stocked rainbow trout. To address this concern, the Inland Deserts Region has agreed to phase in the use of sterile trout within the Walker River Basin. In the meantime, concerns with stocking of rainbow trout have surfaced in many other places statewide. In response to these concerns, DFG is phasing in the use of 100% sterile rainbow trout throughout California. This transition should be complete by 2013, and allotment numbers are not anticipated to be affected. Of the available options, this seems the least disruptive to recreational fishing.

Hatchery Production:

- Total 2008 trout in pounds to Mono County approx. = 550,000 lbs.
- Total 2009 trout in pounds to Mono County = 421,461 lbs.
- Total 2010 trout in pounds to Mono County = 510,902 lbs.
- Estimated 2011 trout in pounds to Mono County = 555,982 lbs.

Hatchery Operations:

Waters are being stocked as quickly as possible given current road and ice conditions. Gary Williams, Senior Hatchery Supervisor, at our Mojave River Hatchery can be contacted for questions regarding stocking schedules; (760) 245-9981.

Fish Springs/Black Rock Lawsuit:

Owens Valley Committee challenged the Hatchery EIR’s conclusions regarding impacts of groundwater pumping at Fish Springs and Black Rock hatcheries. Settlement talks are underway. The other three Hatchery EIR lawsuits are being addressed in headquarters; these other suits would have a relatively limited impact on the Eastern Sierra.

Hot Creek Hatchery Water Quality Fine:

DFG is working with the Lahontan Board to determine if the fine money can be substituted for a project that would enhance water quality/habitat/hatchery operations. The fine is \$225,000.

Hot Creek Hatchery Owens Tui Chub Issue:

Earlier this year, the federally listed endangered Owens tui chub was discovered in the hatchery settling ponds. Future hatchery operations associated with the ponds will need to be coordinated with the U.S. Fish and Wildlife Service.

Budget Concerns: Problems with an aging fleet of vehicles and equipment remain. Recent mandates to reduce the vehicle fleet may result in the loss of up to three stocking trucks. A hiring freeze, a spending freeze, a contracting freeze, and travel restrictions are currently in place. Two hatchery manager positions and two staff positions are vacant and hiring cannot take place until the freeze is lifted, which is unlikely until there is a signed state budget.

FGC 13007 “AB 7”

The Hatchery and Inland Fisheries Fund (HIFF) was established in statute January 1, 2006 (Assembly Bill 7, Cogdill, codified as Fish and Game Code (FGC), Division 10, Chapter 1, Section 13007). The legislation requires that 33 1/3 percent of sport fishing license fees be deposited into the HIFF in order to support programs of the Department of Fish and Game (Department or DFG) ‘related to the management, maintenance, and capital improvement of California’s fish hatcheries, the Heritage and Wild Trout Program (HWTP), and enforcement activities related thereto, and to support other activities eligible to be funded from revenue generated by sport fishing license fees.’

The legislation set production goals for state trout hatcheries based on prior year license sales and prescribed stepped increases beginning in July 2007, with production increasing incrementally through July 2009. The current requirement is 2.75 lbs of released trout per sport fishing license. The legislation dedicated \$2 million annually from the HIFF to the HWTP to fund seven new positions and ‘other activities necessary to the program’. In 2010 three of the seven positions established through FGC § 13007 were eliminated. These eliminated positions along with vacancies and hiring freezes accounted for much of the un-expended monies and associated reduced efforts for FYs 08, 09, and 10. The loss of these positions along with the inability to hire new staff had a significant impact to mandated goals and objectives of the HWTP.

Table 1. FGC 13007 Summaries by Year – Catchable and Fingerling Trout.

YEAR	Catchable and Fingerling Trout Planted (lbs)	Goal (lbs) (per FGC 13007)	Percentage of Goal Attained
2007	3,879,927	4,616,512	84
2008	4,324,957	5,218,438	82.9
2009	3,661,281	5,377,650	68.1
2010	3,450,042	5,376,916	64.2

Table 2. FGC 13007 Summaries by Year – Heritage (i.e., Native) Trout.

YEAR	Number of Heritage Trout Planted	% Required(per FGC 13007)	# Species Required (per FGC 13007)	# Species Attained
2007	2,068,199	NA	NA	4
2008	3,125,582	NA	4	5
2009	3,294,823	15	4	4
2010	2,375,096	20	4	4

New Staff and Looking Ahead

In February of this year (prior to the current hiring freeze), the Region hired a fisheries biologist after having no such position filled for the last few years. Our new staff person is Jim Erdman (760) 873-6071. Please bear with us as we address a substantial backlog of work while trying to get the program up to speed.

The Bishop Office is interested in making use of partnerships and other creative means to better serve the angling public in the Eastern Sierra. Please contact me if you have any ideas about how to make this happen.

**REPORT TO THE LEGISLATURE ON IMPLEMENTATION OF
FGC SECTION 13007
CALENDAR YEARS 2007 to 2009**

EXECUTIVE SUMMARY

The Hatchery and Inland Fisheries Fund (HIFF) was established in statute January 1, 2006 (Assembly Bill 7, Cogdill, codified as Fish and Game Code (FGC), Division 10, Chapter 1, Section 13007). The legislation requires that 33 1/3 percent of sport fishing license fees be deposited into the HIFF in order to support programs of the Department of Fish and Game (Department or DFG) 'related to the management, maintenance, and capital improvement of California's fish hatcheries, the Heritage and Wild Trout Program (HWTP), and enforcement activities related thereto, and to support other activities eligible to be funded from revenue generated by sport fishing license fees.'

The legislation set production goals for state trout hatcheries based on prior year license sales and prescribed stepped increases beginning in July 2007, with production increasing incrementally through July 2009. The legislation dedicated \$2 million annually from the HIFF to the Heritage and Wild Trout Program to fund seven new positions and 'other activities necessary to the program'. It also specified increased production of naturally indigenous stocks of trout beginning with 15 percent of production and at least four species by July 2009, 20 percent and at least four species by July 2010, and 25 percent and at least five species by July 2011 and thereafter.

The legislation also requires that the Department report annually to the fiscal and policy committees in the Legislature beginning in July, 2008. This is a summary report for calendar years 2007, 2008 and 2009 to the Legislature on the implementation of the provisions of FGC § 13007.

The Governor's signing message acknowledged that the goals of FGC § 13007 would be difficult to achieve considering both the current status of the statewide trout hatchery system and California fisheries management strategies and priorities as outlined in the Department's 'Strategic Plan for Trout Management'. The signing message states, "Specifically, the bill sets an aggressive trout production schedule... These prescriptive mandates will be difficult to achieve and must be modified with reasonable goals so that expectations are better aligned to reflect what is sustainable." Additional challenges were posed for the HWTP in 2007 to 2009 by the elimination of three of the seven positions established through FGC § 13007. These eliminated positions along with vacancies and hiring freezes accounted for much of the un-expended monies and associated reduced efforts for FYs 08 and 09. The loss of these positions along with the inability to hire new staff had a significant impact to mandated goals and objectives of the HWTP along with the priorities in the Strategic Plan for Trout Management.

ACCOMPLISHMENTS

Yearly production achievements are illustrated in the following two tables:

Table 1: Catchable and fingerling trout production.

YEAR	Trout Planted (lbs)	Goal (lbs) (per FGC 13007)	Percentage of Goal Attained
2007	3,879,927	4,616,512	84
2008	4,324,957	5,218,438	82.9
2009	3,661,281	5,377,650	68.1

Factors limiting attainment of trout production goal:

- The costs of fuel and fish feeds rose dramatically (nearly 50 percent) beginning in 2007-2008, resulting in fewer fish being reared and planted within existing spending authority.
- To meet the production goals outlined in FGC § 13007 trout hatchery infrastructure needed upgrading and modernization. Allocation of monies toward that need further reduced available monies for fish production.
- Following the discovery of New Zealand Mud Snails at Hot Creek Hatchery production was reduced since their distribution area was severely limited

Table 2: Heritage trout production.

YEAR	Number of Heritage Trout Planted	Total Number of Fish Planted	% of Total	% Required(per FGC 13007)	# Species Required (per FGC 13007)	# Species Attained
2007	2,068,199	11,217,641	18.4	NA	NA	4
2008	3,125,582	13,052,163	23.9	NA	4	5
2009	3,294,823	15,019,445	21.9	15	4	4

In calendar years 2007 to 2009 the HWTP achieved various goals and objectives associated with both legal mandates (FGC § 1727) and program elements. Some of the achievements include, but are not limited to;

- Successfully proposed and achieved Heritage and Wild Trout designation for two watersheds totaling 107.6 stream miles. The HWTP also proposed and achieved Wild Trout designation for two lakes.
- Conducted 164 stream surveys on potential waters for wild trout designation along with monitoring already designated waters.
- Conducted nine creel surveys and managed and maintained angler survey boxes on 69 waters across California.

- The HWTP drafted, completed, or amended six management plans for proposed/designated waters along with 79 summary reports that provided overviews of existing efforts/survey data and management prescriptions.
- Initiated seven scientifically based research projects to help assess existing wild trout populations, current angling regulations, and survey methodologies.
- Provided public presentations to 27 different angling clubs and organizations. Represented the HWTP at seven different sports/trade shows.
- Provided input and consultation on 23 wild trout habitat restoration projects.

EXPENDITURES & REVENUE

Yearly revenues and expenditures are illustrated for FY 06 through 09 in Table 3 below.

Table 3. Revenues and expenditures.

	FY 06/07	FY07/08	FY 08/09	FY 09/10
Fund Balance Reserve		\$2,378,000	\$3,012,000	\$8,798,000
Total Revenues and Transfers	\$18,285,000	\$18,236,000	\$18,813,000	\$22,265,000¹
Expenditures³				
Hatchery Operations	\$12,710,000	\$13,485,000	15,465,000 ²	\$16,057,000
Hatchery Capital Outlay	\$1,129,000	\$3,075,000	\$0	\$1,363,000
Wild and Heritage Trout Program	\$2,000,000	\$901,000 ⁴	\$1,697,000 ⁴	\$1,517,000 ⁴

¹ Correction to transfer second rod stamp and lifetime second rod stamp revenue into HIFF that should have been deposited into the fund since 2006-07.

² \$13,965,000-HIFF and \$1,500,000- Non-Ded FGPF

³ FY 06/07, FY07/08, FY08/09 and FY09/10 actual expenditures.

⁴ Expenditures by FY that did not meet the annual \$2 million allotment set forth in FGC 13007. This is based largely in part to hiring freezes/associated vacant positions, abolished positions through reduction exercises, and contract/purchasing freezes.

Future Management Recommendations for 2011/12 and beyond

The Department anticipates a production goal for 2011 of approximately 4.1 million pounds of trout given the current funding projections. This will equate to 77 percent of the target goal of 5.35 million pounds mandated or 2.11 pounds per license (using 2008 fishing license sales number). The goal for pounds per license is 2.75 pounds per license sold in the base case year.

The Department has made great strides over the past year in the efficacy of producing triploid fish to address concerns raised in the 2010 Hatchery/Stocking EIR. Facilities have begun to install Low-Head Oxygenation Systems that will allow us to increase production goals using existing facilities and their footprints. The Department has requested Capital Outlay funding to implement these improvements at specific facilities (three hatcheries) with the long term goal of statewide application by 2014.

06/21/2011

ADDITIONAL

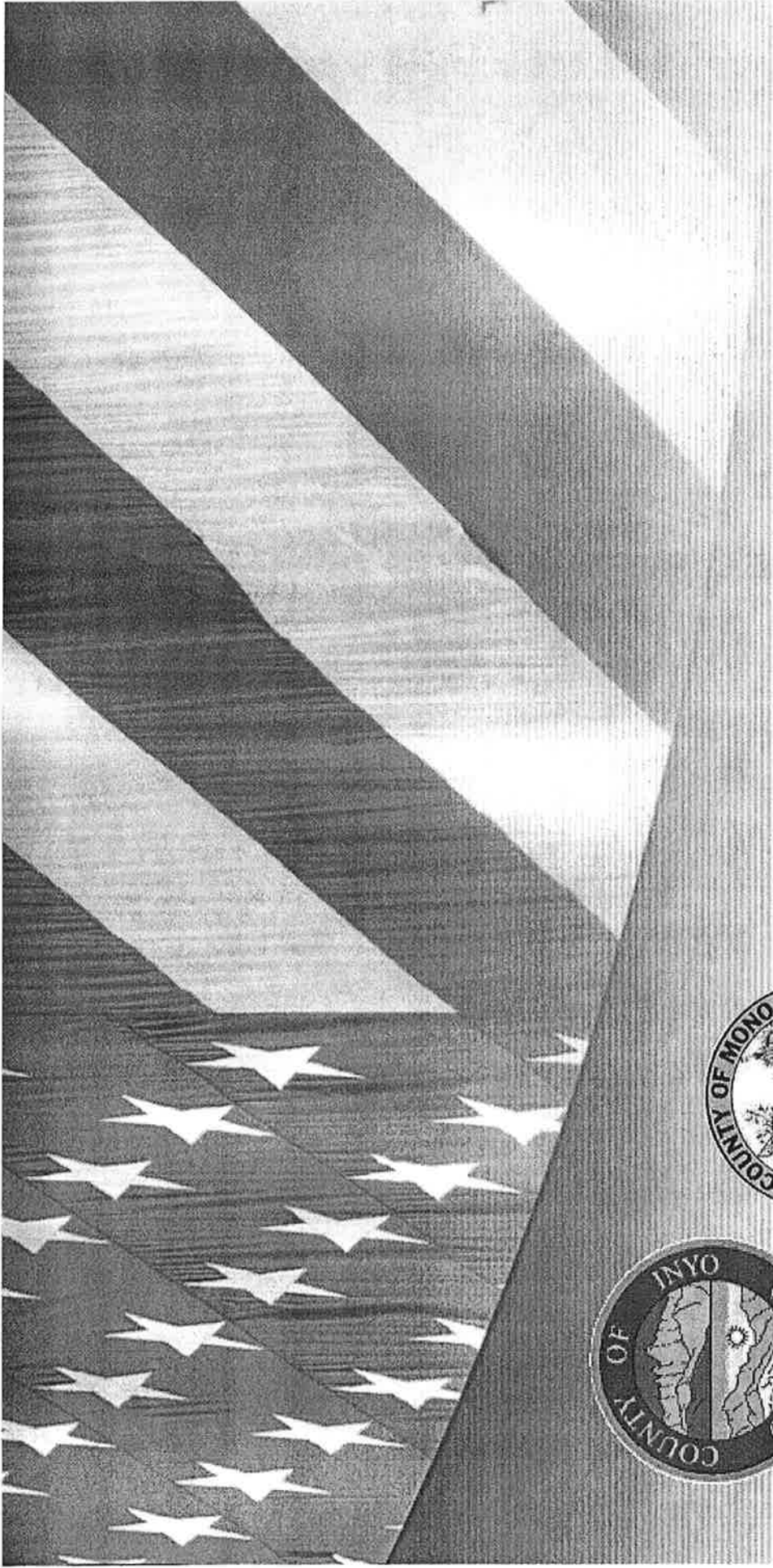
DOCUMENTS

ITEM #13A

VETERAN'S

SERVICES

PRESENTATION



Veteran Services

Counties of Inyo-Mono

ANNUAL UPDATE

Overview of Veteran Services

Trained

- Local, state and federal levels
- Accredited with several National Veteran Service Organizations
- Accredited with State Department of Veteran Affairs

Accountable

- Bi-annual audits by State
- County Auditor/Controller reviews

Funding

- Primarily County General Fund Expense
- State Subvention based on workload
- Revenue fund from sales of veterans' license plates

Provide

- Outreach and advocacy to veterans, dependents and survivors
- Comprehensive benefit counseling
- Claims development, preparation & submission
- Case Management
- Networking with Federal, State and Local Agencies
- Information & Referral

Benefit Assistance for

- Federal
- State
- Local
- Community Services



Advocacy Services Provided

Subvention Claims

Compensation, Pension, HealthCare, Insurance, College Fee Waiver, Discharge Upgrade....

Referrals

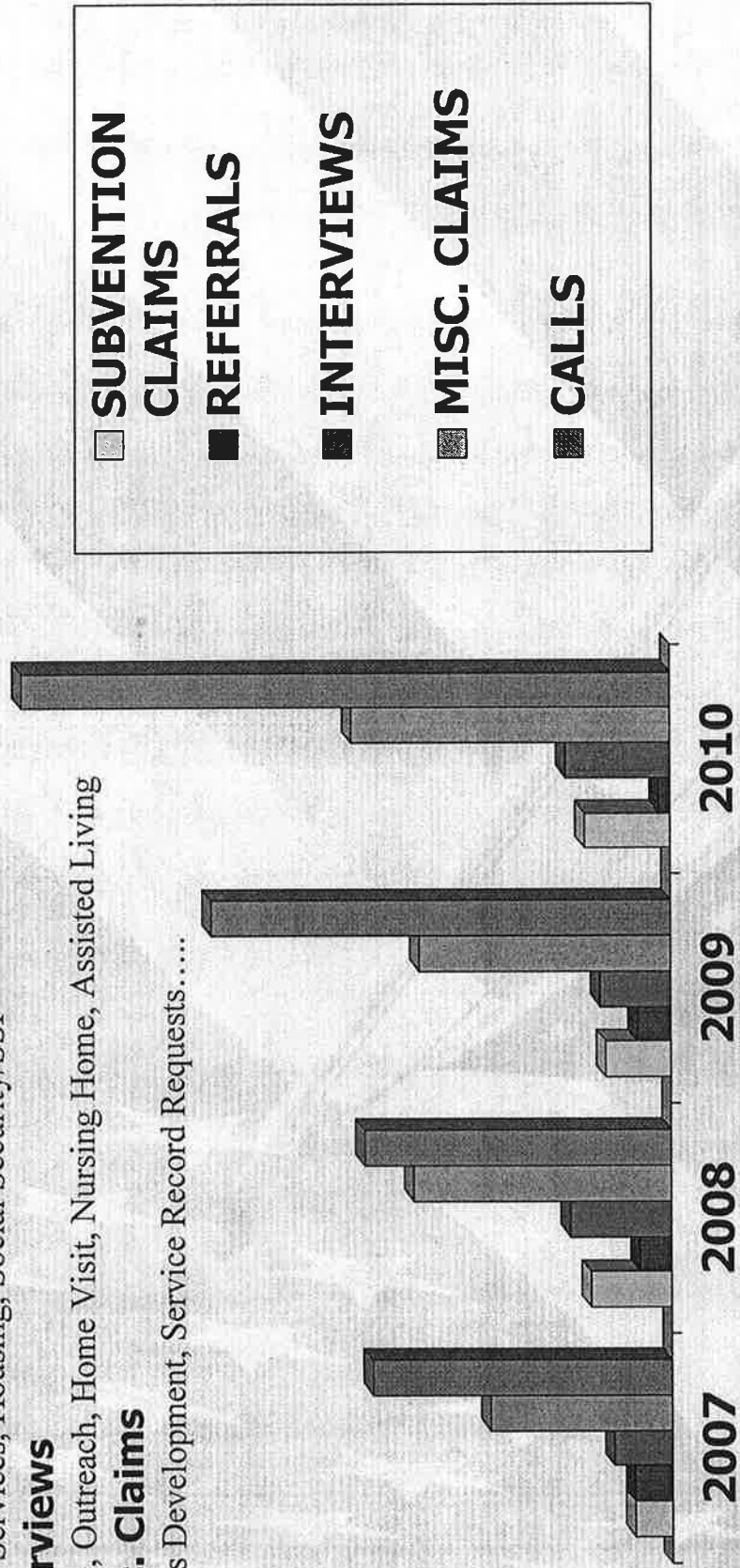
Social Services, Housing, Social Security/SSI

Interviews

Office, Outreach, Home Visit, Nursing Home, Assisted Living

Misc. Claims

Claims Development, Service Record Requests.....



Outreach Services Provided

Outreach dates are

- Reserved for two Thursdays a month for Mono County (weather permitting).

Arranged based on

- Annual healthcare renewals
- Annual pension EVR's (eligibility verification reports)
- Any new claims generated through referrals and local media announcements

Services are provided based on needs

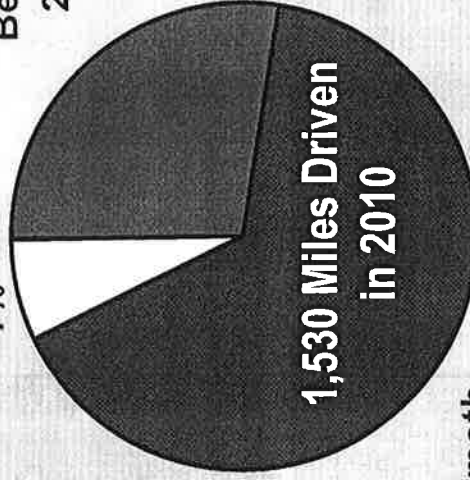
- Internet
- Phone interviews
- Office interviews located in either Inyo or Mono County

Additional Outreach Services provided to Mono Veterans:

- Independent Living Facility and Bishop Care Center in Bishop
- Home Visits
- Provided 5 vouchers for transportation to and from VA Medical Center/Clinics
- County Website
- Quarterly Newsletter
- Welcome Home Letters including Board of Supervisor's Letter

Bridgeport
7%

Benton
28%



Mammoth

65%

Additional Services Provided

Hosted Successful California Association of County Veteran Service Officers Training Conference in Mammoth Lakes May 16-20, 2011

- 49 Counties Represented
- 84 Representatives Present
- Received Recognition for "Communicator"

Implemented the following software:

- Web Based Veteran Program (Vet Pro)
- PKI Encryption (VA)

Completed the following trainings:

- CAPRI Training (VA Software)
- Fast Track Claims Processing
- VA Cyber Security Awareness

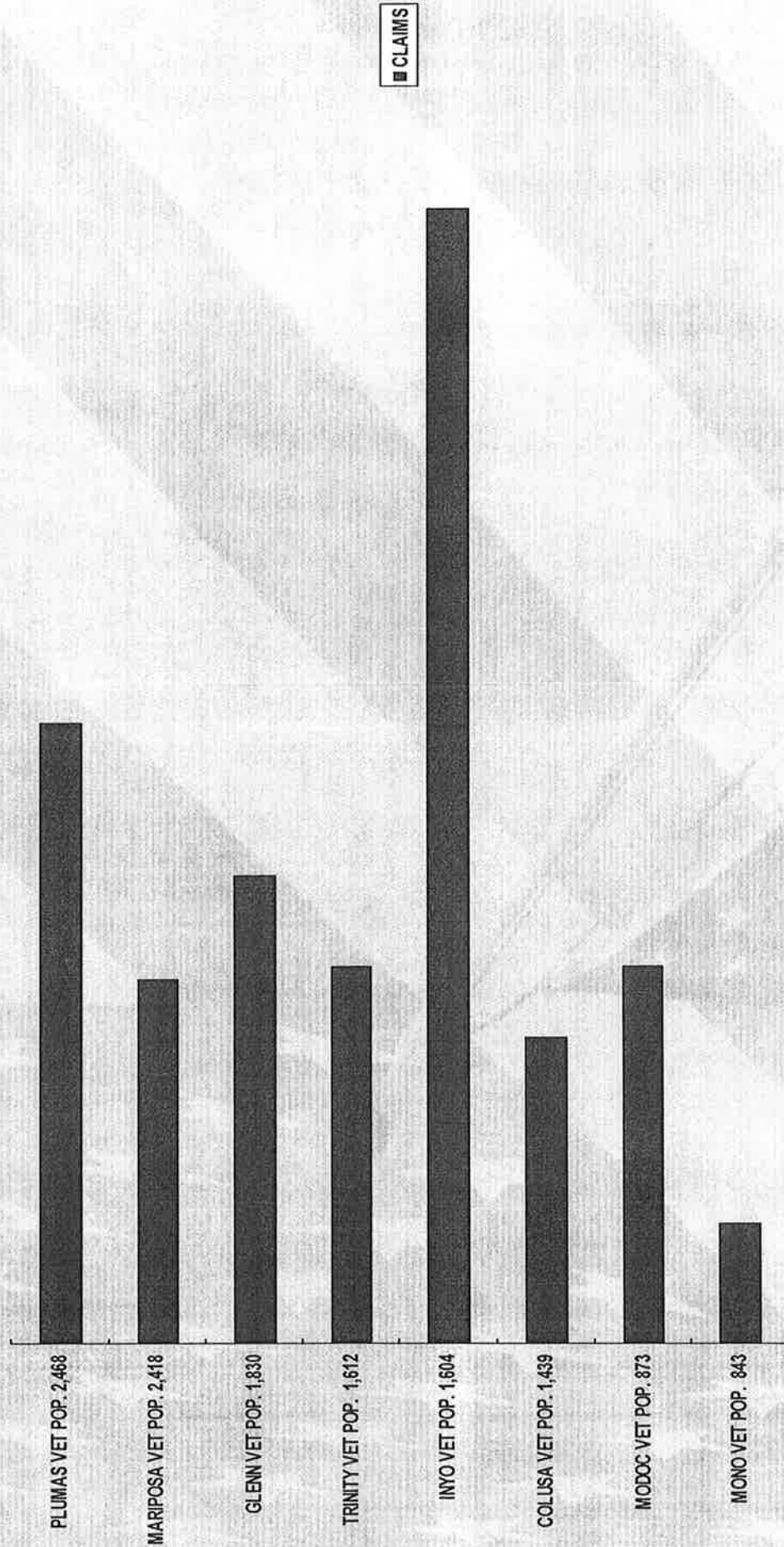
Provided informational booths for the following:

- VFW-Bishop on Veteran's Day
- Mule Days-Traveling Viet Nam Wall
- Senior Health Fair in Walker



County Workload Comparison

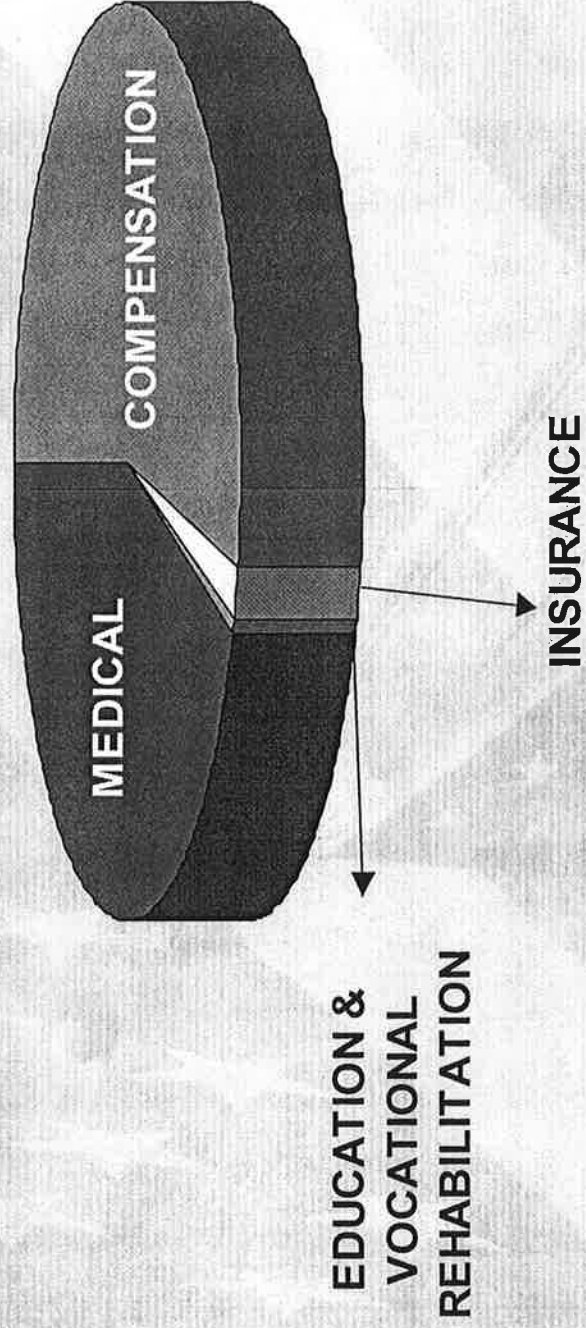
Statistics from California Department of Veteran Affairs, Veterans Services Division, Audited Workload Units



Note: Mono County Residents with Inyo County mailing addresses are counted under Inyo County

2010 VA Benefits Obtained

*Statistics do not show one time benefits
ie: College Fee Waiver, Burial ...*



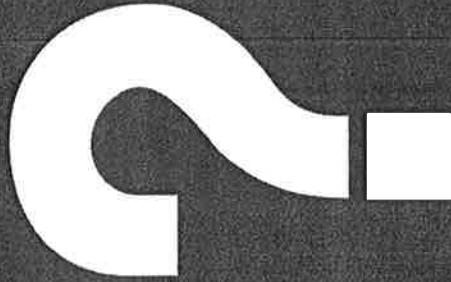
Contact Information/Questions?

207 W. South St.- Bishop, CA 93514

760-873-7850

760-872-1610 Fax

icvso@inyocounty.us



06/21/2011

ADDITIONAL

DOCUMENTS

ITEM #14A

REPORT ON SOLAR

SITES SURVEY

(LISA ISAACS)

Mono County Site Inventory

Solar Energy Development – Potential Medium Scale (1 MV ±) PV Sites

May, 2011

(Sites generally listed North to South)

1. Aucherberry (sp?) Pit
 - County-owned
 - Directly adjacent to 395, n. of Marine housing development
 - Lines nearby – NV Energy?
 - Large exposed/denuded hillside
 - Needs erosion abatement
 - 5± acres

2. Walker Landfill/Transfer Station
 - County-owned land – closed landfill /transfer station operations still open
 - Nearby transmission lines ~0.25 miles away
 - Relatively open exposure
 - Positive economic impact to area?
 - Road access ok

3. Walker Community Center / County Yard
 - County-owned land - currently open
 - Lines nearby
 - Rooftops of storage buildings could be retrofitted w/ PVs
 - 5± acres
 - Road access ok
 - Could power nearby county buildings

4. Mono County “Thou Shalt Not Steal” old aggregate pit (just n. of Caltrans at Sonora Jct)
 - County-owned land?
 - 5± acres?
 - Near 395 (1/2 mile n. of SR 108)
 - Nearby transmission lines ~0.25 miles away
 - Relatively open exposure
 - Road access Ok
 - Cal Trans operations ~.5 miles away

5. Bridgeport Landfill /transfer station
 - County-owned land (?) -closed landfill /transfer station operations still open
 - Nearby transmission lines ~0.3 miles away
 - Open exposure
 - Road access ok
 - Positive economic impact to area?

6. Bodie Road (RV Park site near Hwy 395)
 - 150 acres private property for sale
 - zoned specific plan for RV park
 - Road access ok
 - Conduit and/or undergrounded along Bodie Road

7. Hwy 167 (just north of Mono City) Aggregate Site
 - BLM-owned land (Caltrans site)
 - Lines nearby
 - Road access
 - Depressed land

8. Lee Vining sewage treatment site
 - DWP-owned land / LV PUD
 - Depressed land
 - Lines nearby
 - Road access fair
 - Could power nearby community center / other uses

9. Lee Vining Airport
 - DWP-owned land / county airport
 - Lines nearby ~0.5 miles
 - Road access ok
 - Disturbed land
 - Would need to work around FAA requirements

10. Granite Aggregate Site E. Hwy 120 (along s. side Rush Creek)
 - Private ownership / TBD – site used as aggregate pit
 - Lines nearby within ~0.25 miles
 - Could power operations Granite Construction Pit
 - Lots of depressed land (below grade of surrounding land)
 - Wide, open exposure
 - Road access on private road

11. Marzano Gravel Pit (along n. side Rush Creek)
 - Private ownership / TBD – site used as aggregate pit
 - Close to 395 w/ private road access
 - Lines nearby
 - Lots of depressed land (below grade of surrounding land)
 - Wide, open exposure

12. Mammoth Airport Pit
 - Federally-owned
 - Site used for construction debris (rocks, etc.)
 - LOTS of depressed, low lying land
 - Nearby lines ~.25 miles away
 - Road access over federal land

13. CA DFG Fish Hatchery

- Any extra, impacted, available land?
- State-owned
- Could power hatchery operations
- Adjacent lines
- Road access ok (?)

14. Pumice Valley Landfill

- DWP-owned land (County lease)
- No nearby transmission lines (3+ miles)
- Highly disturbed land
- Wide, open exposure
- Road access ok

15. Benton Transfer Station / old landfill site

- County-owned land (?) – closed landfill - transfer station still in operation
- ~5 acres
- Lines nearby ~.25 miles away
- Road access ok
- Positive economic impact to area?

Site Selection Criteria for consideration in ranking locations (not necessarily in ranked order):

- Previously impacted land / habitat
- Adjacent or near to existing power lines w/ available capacity
- 5+ contiguous acres
- South facing & no shading
- Amenable property owner (Mono County land preferred)
- Low impact on surrounding viewshed
- Existing road access
- Lowest habitat value
- Proximity to powered operations
- Appropriate surface & substrata
- Demonstration opportunities

Note: no contacts with property owners or lease holders have been made– preliminary inventory only.